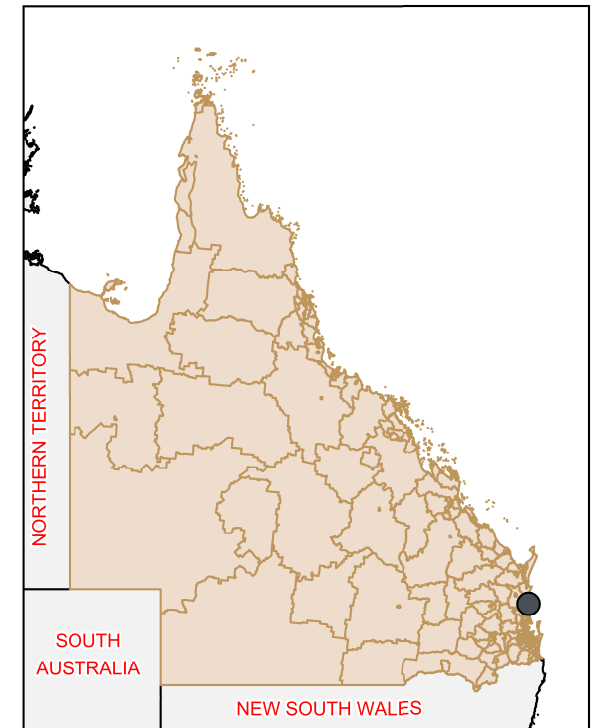
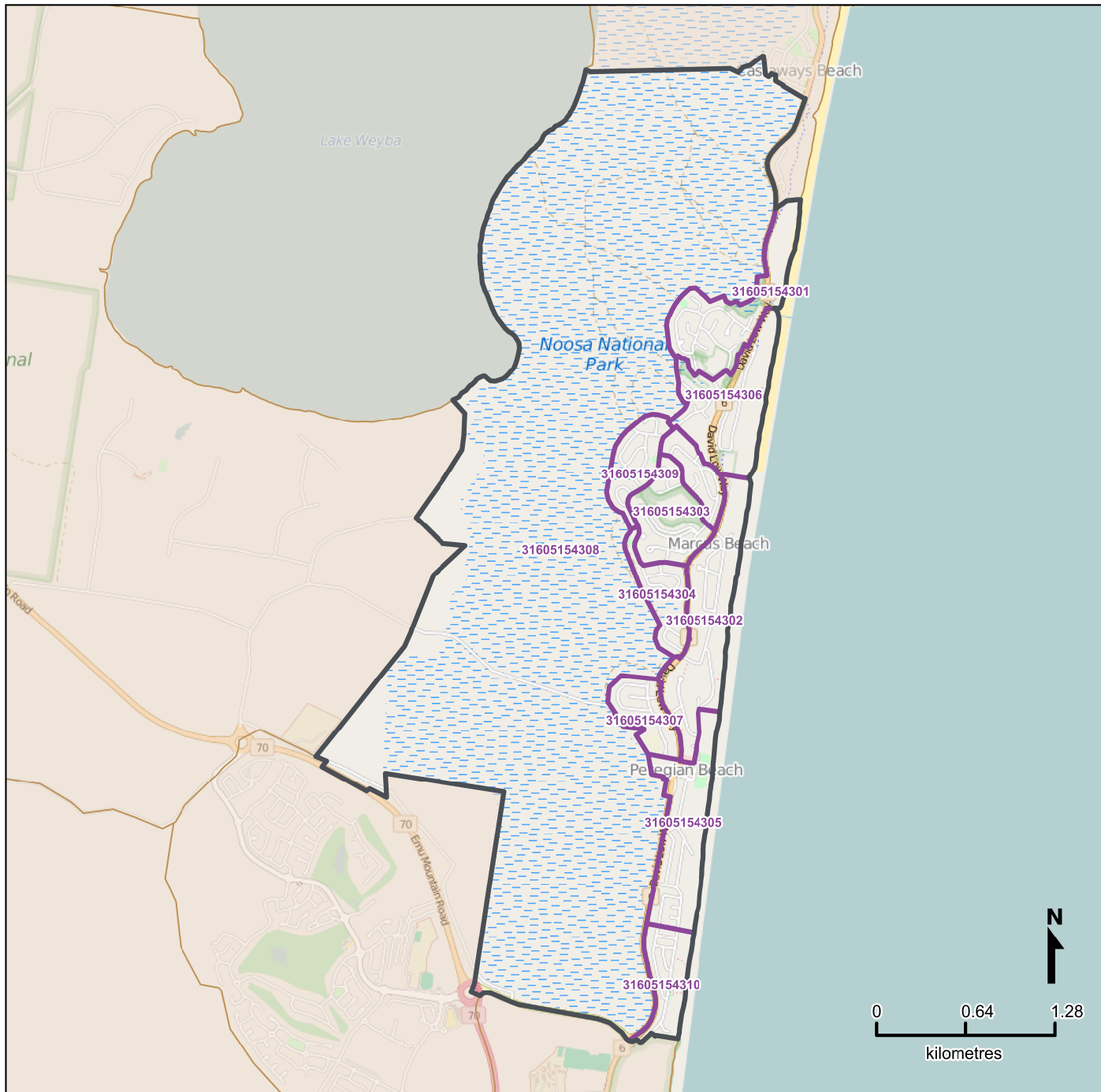










Queensland Statistical Areas, Level 1 (SA1), 2016 - SA1s within Peregian Beach - Marcus Beach SA2



LEGEND

-  Selected SA2
 -  Component SA1s
 -  Neighbouring SA2s
- Map features**
-  City/Town
 -  Park
 -  Main road
 -  Waterway
 -  Railway

Map produced by Queensland Government Statistician's Office, Queensland Treasury (<http://www.qgso.qld.gov.au/products/maps/>). Data sourced from ABS 1270.0.55.001

© OpenStreetMap contributors (<http://openstreetmap.org/>)

 <http://creativecommons.org/licenses/by/4.0>

© The State of Queensland (Queensland Treasury) 2016