

**Main Features**

**Total dwelling approvals monthly change (trend)**

Queensland	↓	2.1%
Australia	↓	1.0%

**Total dwelling approvals annual change (trend)**

Queensland	↓	4.3%
Australia	↑	5.4%

**Commentary**

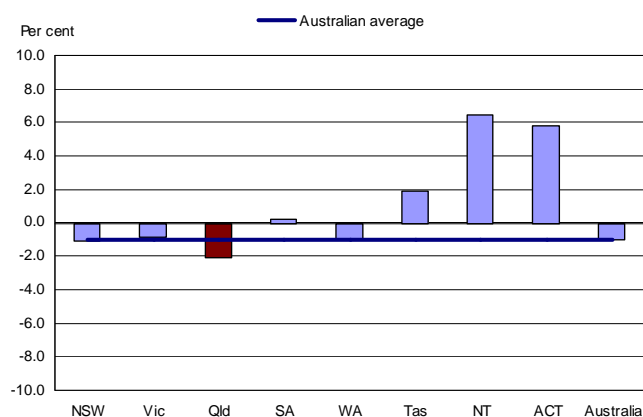
**Dwelling approvals**

- The trend estimate for total dwelling units approved in Queensland in February 2008 was 3,445 dwelling units, a decrease of 2.1% from 3,528 in January 2008. The trend estimate has decreased each month since October 2007. National trend estimates for total dwelling approvals decreased 1.0% in February 2008 to 13,239.
- The trend estimate for the number of private sector house approvals in Queensland decreased 2.1% in February 2008, with a total of 2,465 houses approved. Australia's trend estimate for the number of private sector house approvals decreased in February 2008 by 0.3% to 9,080 approvals.
- In February 2008, trend total dwelling units approved in Queensland accounted for 26.1% of Australia's total dwelling unit approvals. Private sector house approvals in Queensland accounted for 27.1% of Australia's private sector house approvals.
- The trend value of residential building work in Queensland in February 2008 decreased by 3.7% to \$934.7 million, compared with a decrease of 1.0% for Australia to \$3,686.2 million.
- In annual terms, the trend estimate for total dwelling units approved in Queensland in February 2008 was 4.3% lower than the February 2007 estimate. In comparison, total dwelling units approved in Australia increased 5.4% over the same period.

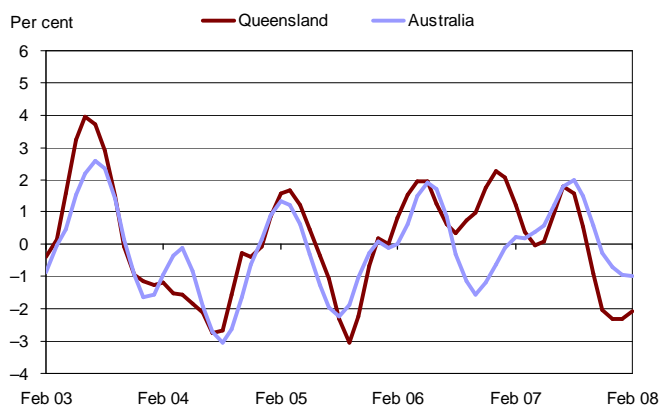
**Non-residential building approvals**

- The trend value of non-residential buildings approved in Queensland in February 2008 was \$654.6 million, an increase of 5.4% over the month. The value of non-residential buildings approved for Australia in February 2008 was \$2,491.7 million, up 0.6%.

**Figure 1: Monthly change in total dwelling units approved (trend), Australia and states and territories, February 2008**



**Figure 2: Monthly change in total dwelling units approved (trend), February 2003 to February 2008**



**Figure 3: Total dwelling units approved (trend), Queensland, February 2003 to February 2008**

