

Main Features

Total dwelling approvals monthly change (trend)

Queensland	↑	0.2%
Australia	↑	0.5%

Total dwelling approvals annual change (trend)

Queensland	↓	27.2%
Australia	↓	9.7%

Commentary

Dwelling approvals

- The trend estimate for total dwelling units approved in Queensland in December 2010 was 2,153, 0.2% higher than the November 2010 figure. The national trend estimate for total dwelling approvals increased 0.5% during the month.
- The trend estimate for the number of private-sector house approvals in Queensland was unchanged in December 2010, with a total of 1,490 houses approved. Australia's trend estimate for the number of private-sector house approvals decreased in December 2010 by 0.3% to 8,136 approvals.
- In December 2010, trend total dwelling units approved in Queensland accounted for 16.0% of Australia's total dwelling unit approvals. Private-sector house approvals in Queensland accounted for 18.3% of Australia's private-sector house approvals.
- The trend nominal value of residential building work approved in Queensland in December 2010 decreased by 2.2% in the month to \$616.2 million. Australia's trend value of residential building work approved increased by 0.5% to \$3,970.0 million.
- In annual terms, the trend estimate for total dwelling units approved in Queensland in December 2010 was 27.2% lower than the December 2009 estimate. In comparison, total dwelling units approved in Australia decreased 9.7% over the same period.

Non-residential building approvals

- The trend value of non-residential buildings approved in Queensland in December 2010 was \$382.1 million, a decrease of 12.5% over the month. The value of non-residential buildings approved in Australia in December 2010 was \$2,265.7 million, an increase of 1.1% from the previous month.

Figure 1: Monthly change in total dwelling units approved (trend), December 2010

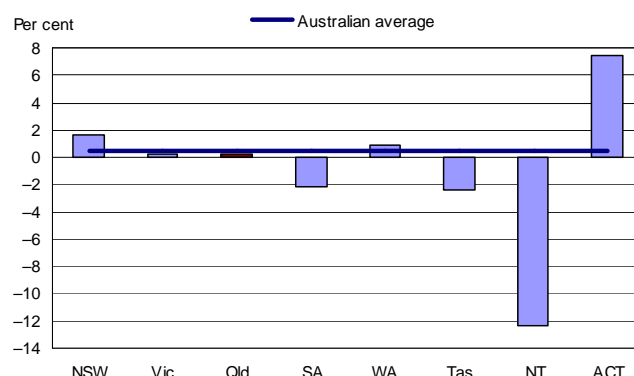


Figure 2: Monthly change in total dwelling units approved (trend)

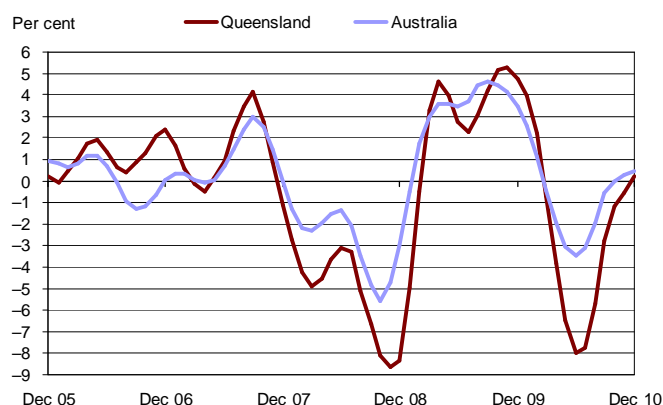


Figure 3: Total dwelling units approved (trend), Queensland

