



Queensland  
Government

OFFICE OF ECONOMIC AND STATISTICAL RESEARCH

INFORMATION BRIEF

AUSTRALIAN DEMOGRAPHIC STATISTICS

DECEMBER QTR 2003

ABS 3101.0

Released 11:30am EST, 4 June 2004

Main Features

Preliminary estimated resident population at Dec 2003:

Queensland	3,840,111
Percentage share of Australia	19.2%
Australia	20,008,677

Population increase (12 months to Dec 2003):

Queensland	↑	2.3%
Australia	↑	1.3%

Queensland components of population increase:

	Dec qtr	% of Aust
Natural increase	6,828	21.8
Net interstate migration	10,435	n.a.
Net overseas migration	6,493	17.8
Total	23,756	35.0

Commentary

- Queensland's preliminary estimated resident population at December 2003 was 3,840,111 persons, an increase of 23,756 persons in the quarter and 85,957 over the previous 12 months. This increase includes natural population increase (births minus deaths), net interstate migration and net overseas migration.
- Over the year to December 2003, Queensland's population increased by 2.3 per cent. In comparison, the Australian population increased by 1.3 per cent. The increase for Queensland was the same as that recorded in the previous twelve month period to December 2002.
- Natural increase for Queensland was 6,828 persons in December quarter 2003 and 24,810 in the year ending December 2003, up 6.4% on the figure of 23,324 in the year ending December 2002.
- Net interstate migration to Queensland continues to be the highest of all Australian states and territories. In December quarter 2003, 10,435 more persons moved to Queensland than moved away. In the year ending December 2003, net interstate migration to Queensland was 37,556, down slightly by 2.8% on the figure of 38,656 in the year ending December 2002.
- Net overseas migration to Queensland was 6,493 persons in December quarter 2003. In the year ending December 2003, net overseas migration was 23,591, up 1.1% on the figure of 23,326 in the year ending December 2002.

- Net interstate migration was the largest contributor to population change in Queensland in the December quarter (43.9%), with natural increase accounting for 28.7% and net overseas migration 27.3%.
- Queensland's annual population growth has remained stable at 2.3% for both the 2002 and 2003 calendar years. These high levels of growth have been mainly a result of high levels of net interstate migration and net overseas migration over this period.

Figure 1: Components of population increase, Queensland, year ending December, 1983 to 2003

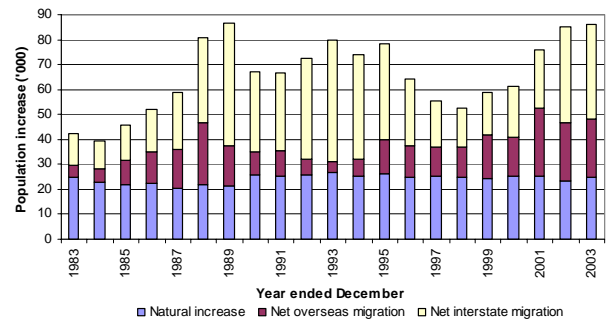


Figure 2: Population annual growth rate, Queensland and Australia, December, 1983 to 2003

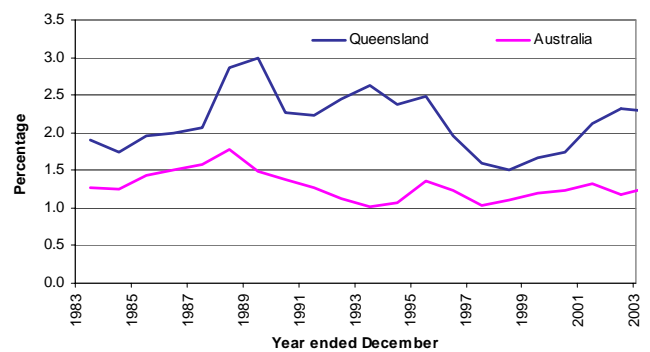


Figure 3: Population growth rate, Australia and states and territories, year ending December 2003

