



Queensland
Government

OFFICE OF ECONOMIC AND STATISTICAL RESEARCH

INFORMATION BRIEF

AUSTRALIAN DEMOGRAPHIC STATISTICS
JUNE QUARTER 2004

ABS 3101.0

Released 11:30am EST, 8 December 2004

Main Features

Preliminary estimated resident population at June 2004:

Queensland	3,882,037
Percentage share of Australia	19.3%
Australia	20,111,297

Population growth (12 months to June 2004):

Queensland	↑	2.1%
Australia	↑	1.2%

Queensland components of population increase:

	Jun qtr	% of Aust
Natural increase	6,979	19.8
Net interstate migration	9,139	n.a.
Net overseas migration	2,365	16.6
Total	18,483	37.3

Commentary

- Queensland's preliminary estimated resident population at June 2004 was 3,882,037 persons, an increase of 18,483 persons in the quarter and 80,998 over the previous 12 months. This increase includes natural population increase (births minus deaths), net interstate migration and net overseas migration.
- Over the year to June 2004, Queensland's population increased by 2.1% compared with the Australian population growth of 1.2%. The increase for Queensland was slightly lower than the figure recorded in the previous twelve month period to June 2003 (2.4%).
- Natural increase for Queensland was 6,979 persons in June quarter 2004 and 24,642 in the year ending June 2004, up 3.8% on the figure of 23,738 in the year ending June 2003.
- Net interstate migration to Queensland continues to be the highest of all Australian states and territories. In June quarter 2004, there were 9,139 more persons who moved to Queensland than moved away. In the year ending June 2004, net interstate migration to Queensland was 36,686 persons, down from 39,207 in the year ending June 2003.
- Net overseas migration to Queensland was 2,365 persons in June quarter 2004. In the year ending June 2004, net overseas migration was 19,670 persons, down from 27,122 in the year ending June 2003.

- Net interstate migration was the largest contributor to population change in Queensland in the June quarter (49.4%), with net overseas migration accounting for 12.8% and natural increase 37.8%.
- Queensland's population growth has eased slightly in the year ending June 2004. This is mainly a result of lower levels of net interstate migration and net overseas migration over this period.

Figure 1: Components of population increase, Queensland, year ending June

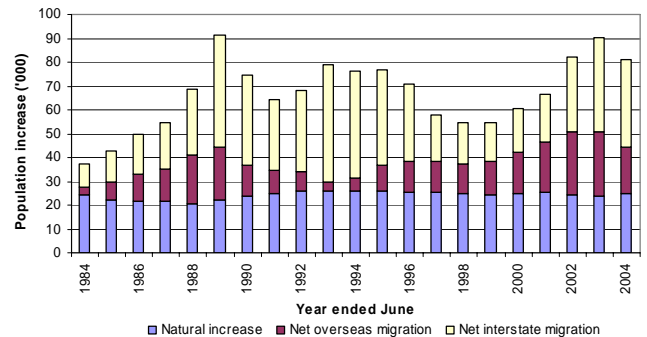


Figure 2: Population annual growth rate, Queensland and Australia, year ending June

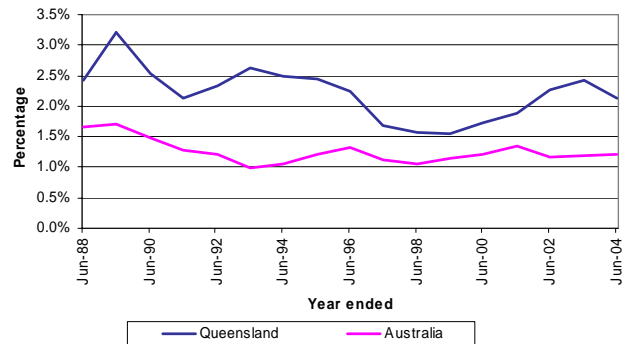


Figure 3: Population growth rate, Australia and states and territories, year ending June 2004

