



Queensland
Government

OFFICE OF ECONOMIC AND STATISTICAL RESEARCH

INFORMATION BRIEF

AUSTRALIAN DEMOGRAPHIC STATISTICS

DECEMBER QUARTER 2004

ABS 3101.0

Released 11:30am EST, 3 June 2005

Note: The Health Insurance Commission (HIC) was not able to provide the ABS with the complete number of Medicare change of address (postcode only) records required to estimate interstate migration for the December quarter 2004. Estimates for this quarter have been statistically modelled on the partial data received from HIC and past interstate migration trends. December quarter 2004 interstate migration estimates will be revised following receipt of the complete records.

Main Features

Preliminary estimated resident population at December 2004:

Queensland	3,919,467
Percentage share of Australia	19.4%
Australia	20,229,786

Population growth (12 months to December 2004):

Queensland	↑ 2.0%
Australia	↑ 1.2%

Queensland components of population increase:

	Dec qtr	% of Aust
Natural increase	7,084	22.4
Net interstate migration	8,121	n.a.
Net overseas migration	4,643	15.8
Total	19,848	32.6

Commentary

- Queensland's preliminary estimated resident population at December 2004 was 3,919,467 persons, an increase of 19,848 persons in the quarter and 75,062 over the previous 12 months.
- Over the year to December 2004, Queensland's population increased by 2.0% compared with the Australian population growth of 1.2%. The increase for Queensland was lower than the figure recorded in the previous twelve-month period to December 2003 (2.3%).
- Natural increase for Queensland was 7,084 persons in December quarter 2004 and 25,447 in the year ending December 2004, up 0.3% on the figure of 25,373 in the year ending December 2003.
- Net interstate migration to Queensland continues to be the highest of all Australian states and territories. In December quarter 2004, there were 8,121 more persons who moved to Queensland than moved away. In the year ending December 2004, net interstate migration to Queensland was 32,801 persons, down from 37,556 in the year ending December 2003.

- Net overseas migration to Queensland was 4,643 persons in December quarter 2004. In the year ending December 2004, net overseas migration was 16,814 persons, down from 22,792 in the year ending December 2003.
- Queensland's population growth has eased to an increase of 75,062 persons in the year ending December 2004, down from an increase of 85,721 persons in the previous 12 month period. This reflects lower levels of net interstate migration and net overseas migration over this period.

Figure 1: Components of population increase, Queensland, year ending December

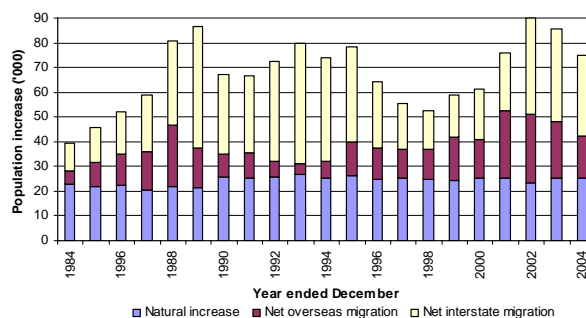


Figure 2: Population annual growth rate, Queensland and Australia, year ending December

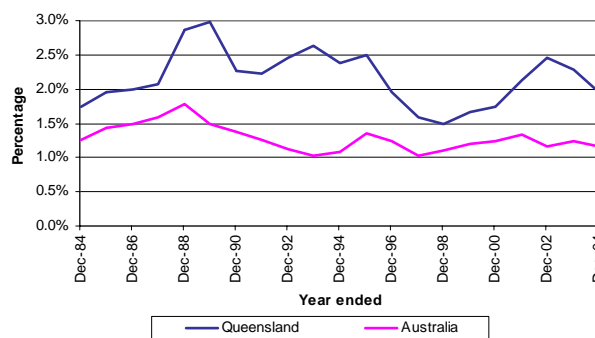


Figure 3: Population growth rate, Australia and states and territories, year ending December 2004

