



Queensland
Government

OFFICE OF ECONOMIC AND STATISTICAL RESEARCH

INFORMATION BRIEF

AUSTRALIAN DEMOGRAPHIC STATISTICS
MARCH QUARTER 2005

ABS 3101.0

Released 11:30am EST, 22 September 2005

Main Features

Preliminary estimated resident population at March 2005:

Queensland	3,945,845
Percentage share of Australia	19.5%
Australia	20,281,380

Population growth (12 months to March 2005):

Queensland	↑	2.0%
Australia	↑	1.1%

Queensland components of population increase:

	Mar qtr	% of Aust
Natural increase	5,592	17.9
Net interstate migration	7,747	n.a.
Net overseas migration	6,296	15.7
Total	19,635	27.5

Commentary

- Queensland's preliminary estimated resident population at March 2005 was 3,945,845 persons, an increase of 19,635 persons in the quarter and 76,861 over the previous 12 months.
- Over the year to March 2005, Queensland's population increased by 2.0%, compared with the Australian population growth of 1.1%. The increase for Queensland was lower than the figure recorded in the previous twelve-month period, to March 2004 (2.3%).
- Natural increase for Queensland was 5,592 persons in the March quarter 2005 and 24,792 in the year ending March 2005, down 2.2% on the figure of 25,344 in the year ending March 2004.
- Net interstate migration to Queensland continues to be the highest of all Australian states and territories. In the March quarter 2005, there were 7,747 more persons who moved to Queensland than moved away. In the year ending March 2005, net interstate migration to Queensland was 33,280 persons, down from 37,286 in the year ending March 2004.
- Net overseas migration to Queensland was 6,296 persons in the March quarter 2005. In the year ending March 2005, net overseas migration was 18,789 persons, down from 25,145 in the year ending March 2004.
- Queensland's population growth has eased to an increase of 76,861 persons in the year ending March 2005, down from an increase of 87,775 persons in the previous 12-month period. This reflects lower

levels of net interstate migration and net overseas migration over this period.

Figure 1: Components of population increase, Queensland, year ending March

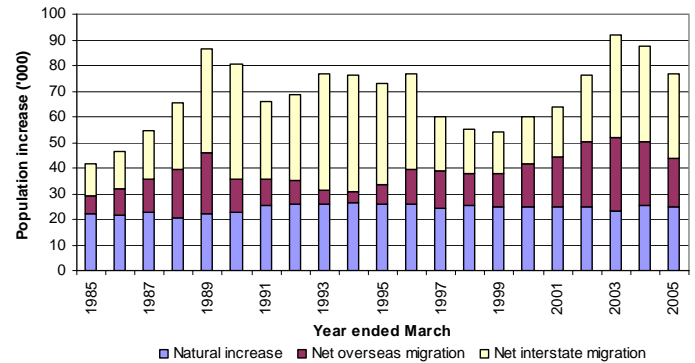


Figure 2: Population annual growth rate, Queensland and Australia, year ending March

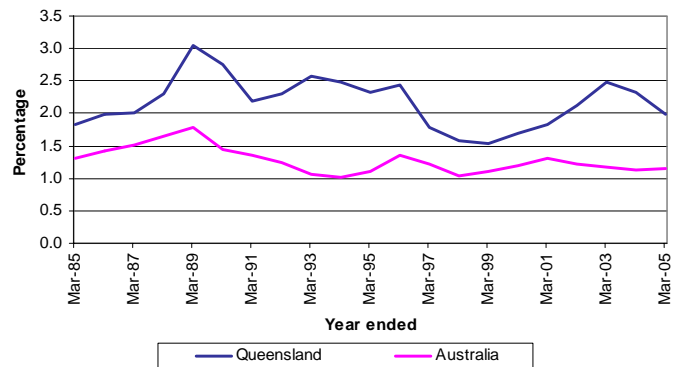


Figure 3: Population growth rate, Australia and states and territories, year ending March 2005

