



Queensland
Government

OFFICE OF ECONOMIC AND STATISTICAL RESEARCH

INFORMATION BRIEF

AUSTRALIAN DEMOGRAPHIC STATISTICS
JUNE QUARTER 2005

ABS 3101.0

Released 11:30am EST, 9 December 2005

Main Features

Preliminary estimated resident population at June 2005:

Queensland	3,963,968
Percentage share of Australia	19.5%
Australia	20,328,609

Population growth (12 months to June 2005):

Queensland	↑	2.0%
Australia	↑	1.2%

Queensland components of population increase:

	Jun qtr	% of Aust
Natural increase	8,577	24.5
Net interstate migration	7,353	n.a.
Net overseas migration	2,193	18.0
Total	18,123	38.4

Commentary

- Queensland's preliminary estimated resident population at June 2005 was 3,963,968 persons, an increase of 18,123 persons in the quarter and 75,891 over the previous 12 months.
- Over the year to June 2005, Queensland's population increased by 2.0%, compared with the Australian population growth of 1.2%. The increase for Queensland was lower than the figure recorded in the previous twelve-month period, to June 2004 (2.3%).
- Natural increase for Queensland was 8,577 persons in the June quarter 2005 and 27,326 in the year ending June 2005, up 9.5% on the figure of 24,953 in the year ending June 2004.
- Net interstate migration to Queensland continues to be the highest of all Australian states and territories. In the June quarter 2005, there were 7,353 more persons who moved to Queensland than moved away. In the year ending June 2005, net interstate migration to Queensland was 31,494 persons, down from 36,686 in the year ending June 2004.
- Net overseas migration to Queensland was 2,193 persons in the June quarter 2005. In the year ending June 2005, net overseas migration was 17,071 persons, down from 25,399 in the year ending June 2004.
- Queensland's population growth has eased to an increase of 75,891 persons in the year ending June 2005, down from an increase of 87,038 persons in the previous 12-month period. This reflects lower

levels of net interstate migration and net overseas migration over this period.

Figure 1: Components of population increase, Queensland, year ending June

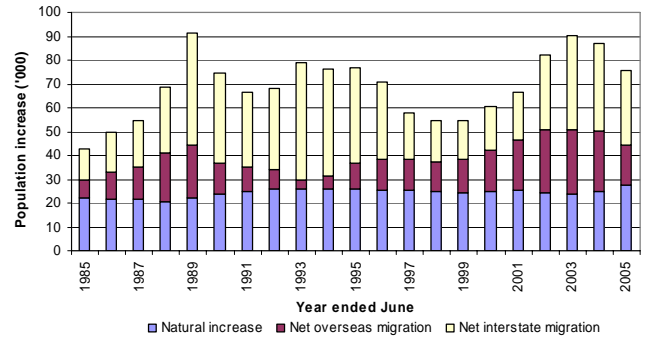


Figure 2: Population annual growth rate, Queensland and Australia, year ending June

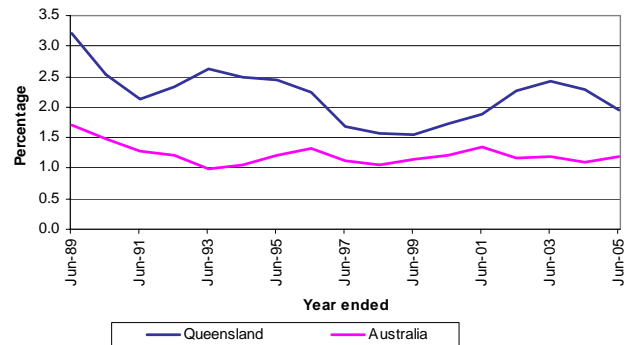


Figure 3: Population growth rate, Australia and states and territories, year ending June 2005

