



Queensland  
Government

OFFICE OF ECONOMIC AND STATISTICAL RESEARCH

INFORMATION BRIEF

AUSTRALIAN DEMOGRAPHIC STATISTICS  
SEPTEMBER QUARTER 2005

ABS 3101.0

Released 10:30am AEST, 21 March 2006

Main Features

Preliminary estimated resident population at 30 September 2005:

Queensland	3,980,778
Percentage share of Australia	19.5%
Australia	20,387,886

Population growth (12 months to September 2005):

Queensland	↑	1.9%
Australia	↑	1.2%

Queensland components of population increase:

	Sep qtr	% of Aust
Natural increase	6,315	20.2
Net interstate migration	6,125	n.a.
Net overseas migration	4,370	15.6
Total	16,810	28.4

Commentary

- Queensland's preliminary estimated resident population at 30 September 2005 was 3,980,778 persons, an increase of 16,810 persons in the quarter and 75,119 over the previous 12 months.
- Over the year to 30 September 2005, Queensland's population increased by 1.9%, compared with the Australian population growth of 1.2%. The increase for Queensland was lower than the figure recorded in the previous twelve-month period, to 30 September 2004 (2.2%).
- Natural increase for Queensland was 6,315 persons in September quarter 2005 and 27,568 in the year ending 30 September 2005, up 9.4% on the figure of 25,200 in the year ending 30 September 2004.
- Net interstate migration to Queensland continues to be the highest of all Australian states and territories. In September quarter 2005, there were 6,125 more persons who moved to Queensland than moved away. In the year ending 30 September 2005, net interstate migration to Queensland was 30,049 persons, down from 35,115 in the year ending 30 September 2004.
- Net overseas migration to Queensland was 4,370 persons in September quarter 2005. In the year ending 30 September 2005, net overseas migration was 17,502 persons, down from 22,379 in the year ending 30 September 2004.

- Queensland's population growth has eased to an increase of 75,119 persons in the year ending 30 September 2005, down from an increase of 82,694 persons in the previous 12-month period. This reflects lower levels of net interstate migration and net overseas migration over this period.

Figure 1: Components of population increase, Queensland, year ending 30 September

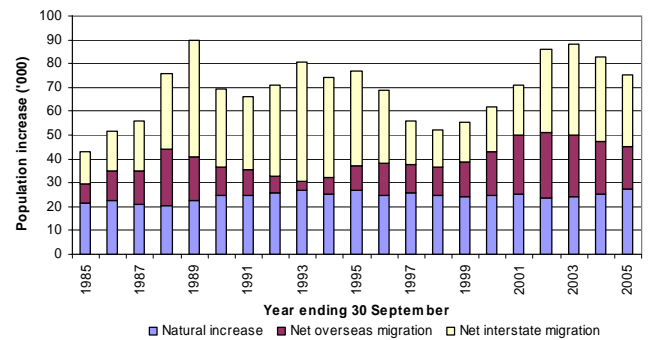


Figure 2: Population annual growth rate, Queensland and Australia, year ending 30 September

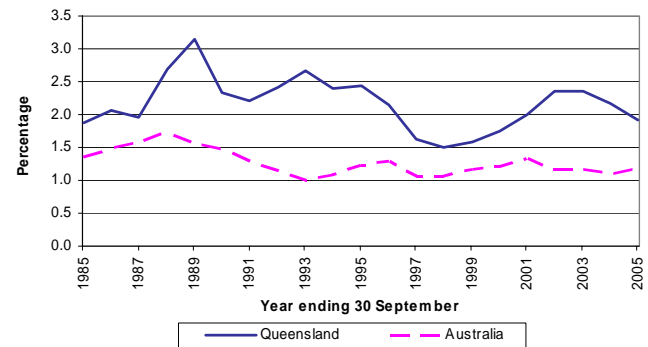


Figure 3: Population growth rate, Australia and states and territories, year ending 30 September 2005

