

Main Features

Preliminary estimated resident population at 31 March 2006:

Queensland	4,035,707
<i>Percentage share of Australia</i>	<i>19.6%</i>
Australia	20,551,865

Population growth (12 months to March 2006):

Queensland	↑ 2.0%
Australia	↑ 1.3%

Queensland components of population increase:

	Mar qtr	% of Aust
Natural increase	7,102	23.7
Net interstate migration	5,258	n.a.
Net overseas migration	7,099	15.5
Total	19,459	25.7

Commentary

- Queensland's preliminary estimated resident population at 31 March 2006 was 4,035,707 persons, an increase of 19,459 persons in the quarter and 80,177 over the previous 12 months.
- Over the year to 31 March 2006, Queensland's population increased by 2.0%, compared with the Australian population growth of 1.3%. The increase for Queensland was lower than the figure recorded in the previous twelve-month period, to 31 March 2005 (2.2%).
- Natural increase for Queensland was 7,102 persons in the March quarter 2006 and 28,913 in the year ending 31 March 2006, up 11.1% on the figure of 26,029 in the year ending 31 March 2005.
- Net interstate migration to Queensland continues to be the highest of all Australian states and territories. In March quarter 2006, there were 5,258 more persons who moved to Queensland than moved away. In the year ending 31 March 2006, net interstate migration to Queensland was 26,773 persons, down from 33,208 in the year ending 31 March 2005.
- Net overseas migration to Queensland was 7,099 persons in the March quarter 2006. In the year ending 31 March 2006, net overseas migration was 24,491 persons, down from 27,237 in the year ending 31 March 2005.

- Queensland's population growth has eased to an increase of 80,177 persons in the year ending 31 March 2006, down from an increase of 86,546 persons in the previous 12-month period. This reflects lower levels of net interstate migration and net overseas migration over this period.

Figure 1: Components of population increase, Queensland, year ending 31 March

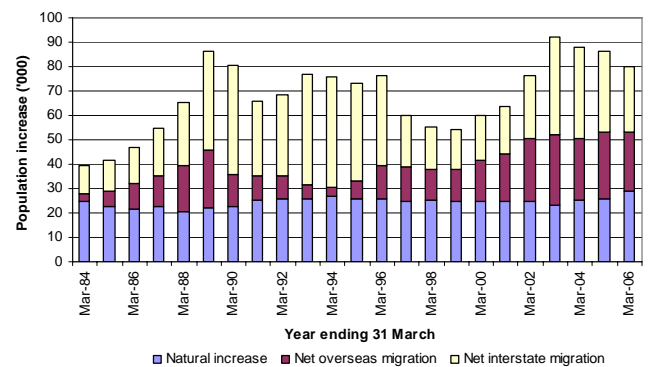


Figure 2: Population annual growth rate, Queensland and Australia, year ending 31 March

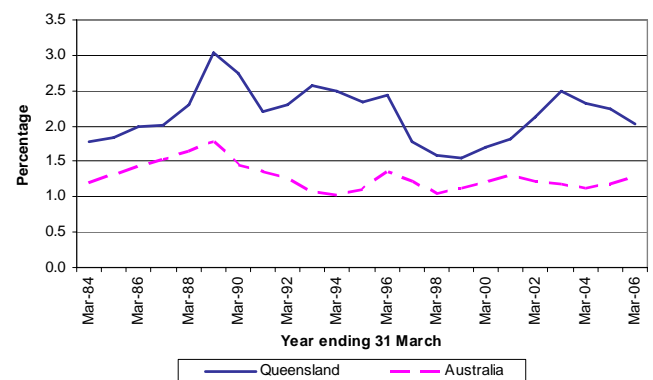


Figure 3: Population growth rate, Australia and states and territories, year ending 31 March 2006

