

**Main Features**

**Preliminary estimated resident population at 30 June 2006:**

Queensland	4,053,444
<i>Percentage share of Australia</i>	<i>19.7%</i>
Australia	20,605,488

**Population growth (12 months to June 2006):**

Queensland	↑	1.9%
Australia	↑	1.3%

**Queensland components of population increase:**

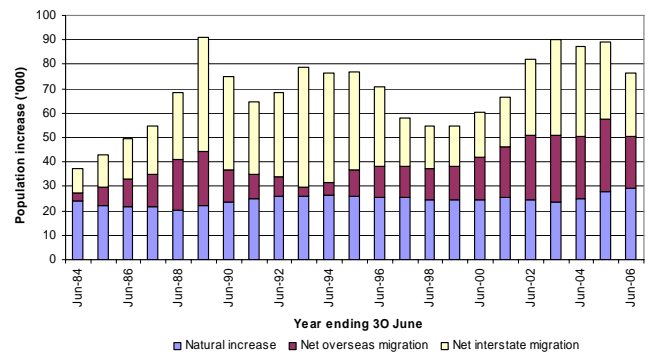
	Jun qtr	% of Aust
Natural increase	8,265	23.1
Net interstate migration	6,354	n.a.
Net overseas migration	3,118	17.5
<b>Total</b>	<b>17,737</b>	<b>33.1</b>

**Commentary**

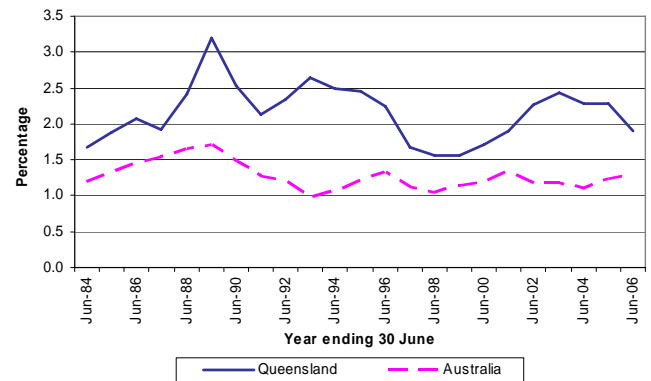
- Queensland's preliminary estimated resident population at 30 June 2006 was 4,053,444 persons, an increase of 17,737 persons in the quarter and 76,392 over the previous 12 months.
- Over the year to 30 June 2006, Queensland's population increased by 1.9%, compared with the Australian population growth of 1.3%. The increase for Queensland was lower than the figure recorded in the previous twelve-month period, to 30 June 2005 (2.3%).
- Natural increase for Queensland was 8,265 persons in June quarter 2006 and 29,238 in the year ending 30 June 2006, up 4.7% on the figure of 27,926 in the year ending 30 June 2005.
- Net interstate migration to Queensland continues to be the highest of all Australian states and territories. In June quarter 2006, there were 6,354 more persons who moved to Queensland than moved away. In the year ending 30 June 2006, net interstate migration to Queensland was 25,774 persons, down from 31,494 in the year ending 30 June 2005.
- Net overseas migration to Queensland was 3,118 persons in the June quarter 2006. In the year ending 30 June 2006, net overseas migration was 21,380 persons, down from 29,555 in the year ending 30 June 2005.

- Queensland's population growth has eased to an increase of 76,392 persons in the year ending 30 June 2006, down from an increase of 88,975 persons in the previous 12-month period. This reflects lower levels of net interstate migration and net overseas migration over this period.

**Figure 1: Components of population increase, Queensland, year ending 30 June**



**Figure 2: Population annual growth rate, Queensland and Australia, year ending 30 June**



**Figure 3: Population growth rate, Australia and states and territories, year ending 30 June 2006**

