

Main Features

Preliminary estimated resident population at 30 September 2006:

Queensland	4,070,447
<i>Percentage share of Australia</i>	<i>19.7%</i>
Australia	20,674,445

Population growth (12 months to September 2006):

Queensland	1.9%
Australia	1.3%

Queensland components of population increase:

	Sept qtr	% of Aust
Natural increase	5,771	18.3
Net interstate migration	5,627	n.a.
Net overseas migration	5,605	15.0
Total	17,003	24.7

Commentary

- Queensland's preliminary estimated resident population at 30 September 2006 was 4,070,447 persons, an increase of 17,003 persons in the quarter and 75,549 over the previous 12 months.
- Over the year to 30 September 2006, Queensland's population increased by 1.9%, compared with the Australian population growth of 1.3%. The increase for Queensland was lower than the figure recorded in the previous twelve-month period, to 30 September 2005 (2.2%).
- Natural increase for Queensland was 5,771 persons in September quarter 2006 and 28,689 in the year ending 30 September 2006, up 2.4% on the figure of 28,026 in the year ending 30 September 2005.
- Net interstate migration to Queensland continues to be the highest of all Australian states and territories. In the September quarter 2006, there were 5,627 more persons who moved to Queensland than moved away. In the year ending 30 September 2006, net interstate migration to Queensland was 25,276 persons, down from 30,049 in the year ending 30 September 2005.
- Net overseas migration to Queensland was 5,605 persons in the September quarter 2006. In the year ending 30 September 2006, net overseas migration was 21,584 persons, down from 28,804 in the year ending 30 September 2005.

- Queensland's population growth has eased with an increase of 75,549 persons in the year ending 30 September 2006, compared with an increase of 86,879 persons in the previous 12-month period. This reflects lower levels of net interstate migration and net overseas migration over this period.

Figure 1: Components of population increase, Queensland, year ending 30 September

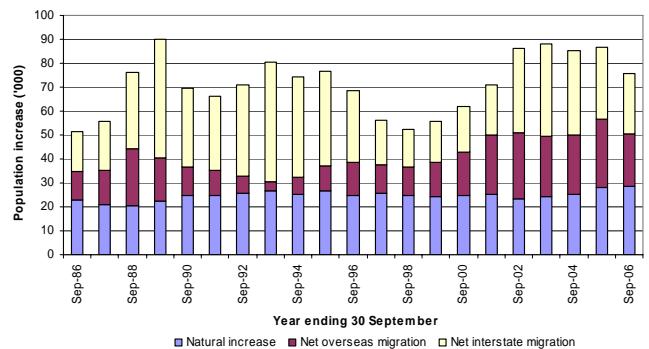


Figure 2: Population annual growth rate, Queensland and Australia, year ending 30 September

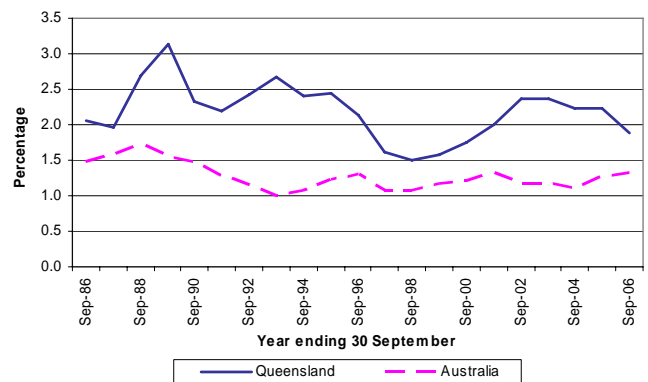


Figure 3: Population growth rate, Australia and states and territories, year ending 30 September 2006

