

Main Features

Preliminary estimated resident population at 31 December 2006:

Queensland	4,132,015
<i>Percentage share of Australia</i>	<i>19.8%</i>
Australia	20,851,997

Population growth (12 months to 31 December 2006):

Queensland	2.0%
Australia	1.4%

Queensland components of population increase*:

	12 mths to Dec 2006	% of growth
Natural increase	28,172	34.2
Net interstate migration	25,512	31.0
Net overseas migration	23,981	29.1
Total	82,368	100.0

* Differences between total growth and the sum of the components of change are due to intercensal error.

Commentary

- This release contains preliminary re-based estimates of the resident populations (ERP) of Australia and the states and territories for September 2001 to June 2006 based on the results of the 2006 Census of Population and Housing. Population estimates for September and December quarters 2006 have been compiled using the 30 June 2006 estimated resident populations as a base. A new methodology for estimating net overseas migration was introduced from September quarter 2006.
- Queensland's preliminary estimated resident population at 31 December 2006 was 4,132,015 persons, 19.8% of the Australian population. Queensland's population increased by 82,368 persons over the 12 months to 31 December 2006, compared with an increase of 94,333 persons in the previous 12-month period. This largely reflects lower levels of net interstate migration and net overseas migration over this period.
- Over the year to 31 December 2006, Queensland's population increased by 2.0%, compared with the Australian population growth of 1.4%.
- Natural increase (births minus deaths) for Queensland was 28,172 persons in the year ending 31 December 2006, down 5.1% on the figure of 29,700 in the year ending 31 December 2005.
- Net overseas migration to Queensland was 23,981 persons in the year ending 31 December 2006, down

10.0% on the 26,657 persons in the previous 12-month period.

- Net interstate migration to Queensland continues to ease, but is still the highest of all Australian states and territories. In the 12 months to 31 December 2006 net interstate migration to Queensland was 25,512 persons compared with 29,262 persons a year earlier.

Figure 1: Components of population increase, Queensland, year ending 31 December

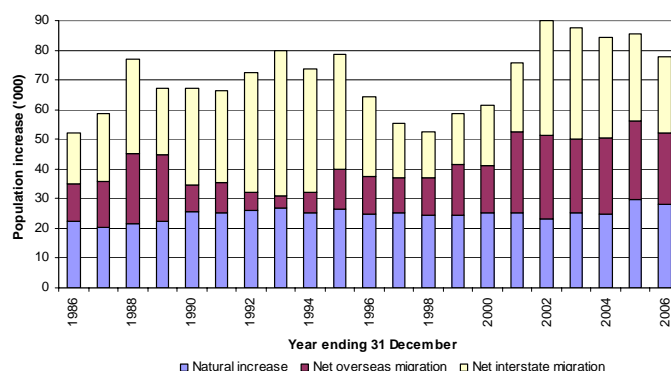


Figure 2: Population annual growth rate, Queensland and Australia, year ending 31 December

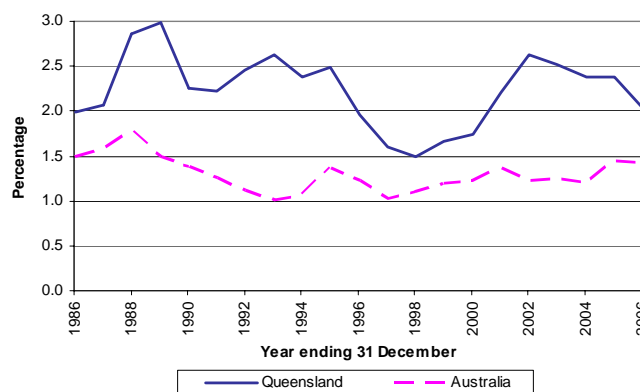


Figure 3: Population growth rate, Australia and states and territories, year ending 31 December 2006

