

Main Features

Preliminary estimated resident population at 30 June 2009:

Queensland	4,406,823
Australia	21,874,920
Qld share of national population	20.1%

Population growth (12 months to 30 June 2009):

Queensland	2.6%
Australia	2.1%
Qld share of national growth	25.5%

Queensland components of population increase:

	12 mths to Jun 2009	% of growth
Net overseas migration	54,410	48.2
Natural increase	40,110	35.5
Net interstate migration	18,388	16.3
Total	112,908	100.0

Commentary

- Queensland's preliminary estimated resident population at 30 June 2009 was 4,406,823 persons. Queensland's population accounts for 20.1% of the Australian population.
- Queensland's population increased by a record 112,908 persons over the 12 months to 30 June 2009. This was a growth rate of 2.6%, the second-highest growth rate of all states and territories, and higher than the growth rate for Australia (2.1%) (Figure 1).
- Net overseas migration made the largest contribution to population growth in Queensland in the 12 months to 30 June 2009 (48.2%), followed by natural increase (35.5%) and net interstate migration (16.3%).
- Net overseas migration to Queensland was 54,410 persons in the year ending 30 June 2009. The figure for the latest 12-month period was the highest annual figure recorded since the introduction of the estimated resident population series by the Australian Bureau of Statistics in 1971.
- Natural increase (births minus deaths) in the year ending 30 June 2009 for Queensland was 40,110 persons, the highest on record since the introduction of the series by the Australian Bureau of Statistics in 1971. This figure should be treated with some caution, as it is a preliminary figure based on year of registration, rather than year of occurrence.

- Net interstate migration to Queensland (18,388 persons over the 12 months to 30 June 2009) continues to ease from the levels recorded in the early part of this decade, but still remains the highest of all Australian states and territories.

Figure 1: Population growth rate, Australia and states and territories, year ending 30 June 2009

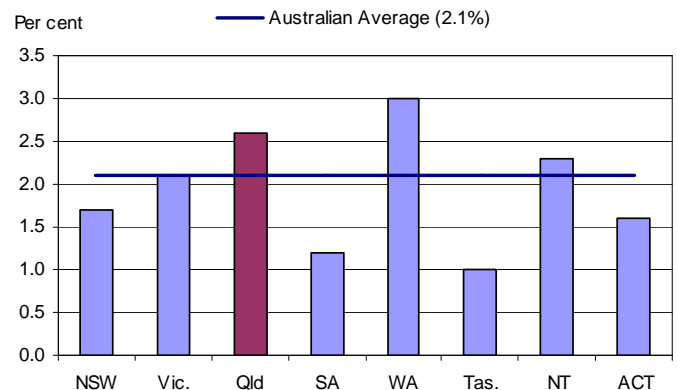


Figure 2: Population increase by component of growth, Queensland, year ending 30 June

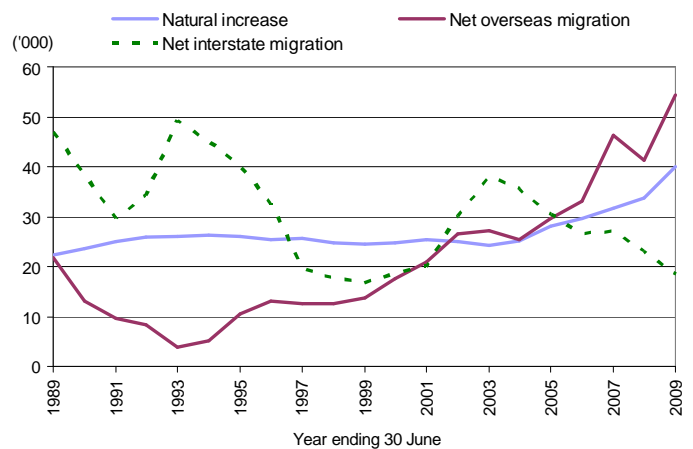


Figure 3: Population annual growth rate, Queensland and Australia, year ending 30 June

