

Population Growth, Queensland, March Quarter 2013

Source: ABS 3101.0, released 26 September 2013, 11:30 am AEST

Key data

Preliminary estimated resident population (ERP) at 31 March 2013:

Queensland	4,638,075
Australia	23,032,746
Queensland share of national population	20.1%

Population growth (12 months to 31 March 2013):

Queensland	2.0%
Australia	1.8%
Queensland share of national growth	23.2%

Main Findings¹

- Queensland's preliminary ERP at 31 March 2013 was 4,638,075 persons (20.1% of the Australian population). This reflects an increase of 92,321 persons over the 12 months to 31 March 2013, and 24,258 persons since 31 December 2012 (Figure 1).
- Queensland recorded the third-highest population growth rate (2.0%) of all jurisdictions and a higher rate than the nation (1.8%) in the 12 months to 31 March 2013 (Figure 2).
- Net overseas migration made the largest contribution to population growth in Queensland in the 12 months to 31 March 2013 (50.2%) followed by natural increase (38.7%) and net interstate migration (11.1%) (Table 1).
- Natural increase in the 12 months to 31 March 2013 was 35,745 persons, a slight decrease from the 36,214 persons recorded during the 12 months to 31 December 2012 (Figure 3).
- In the 12 months to 31 March 2013, net overseas migration to Queensland was 46,321 persons. This was lower than the level recorded during the 12 month period to 31 December 2012 (47,251 persons).
- Net interstate migration contributed 10,255 persons to population change in Queensland over the 12 months to 31 March 2013, a slight decrease from the 11,354 persons recorded during the 12 months to 31 December 2012.

Table 1: Components of population increase, Queensland

	12 months to 31 March 2013	% of growth
Natural increase	35,745	38.7
Net overseas migration	46,321	50.2
Net interstate migration	10,255	11.1
Total	92,321	100.0

Figure 1: Annual population increase, Queensland

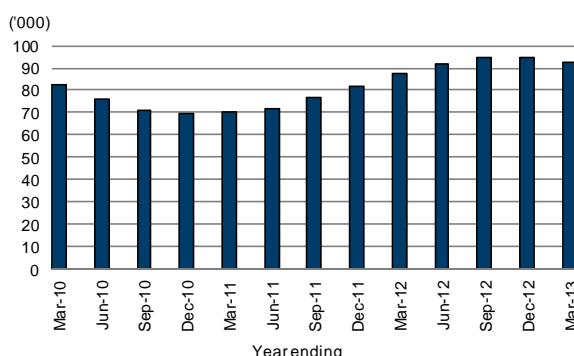


Figure 2: Population growth rate, Australia and states and territories, year ending 31 March 2013

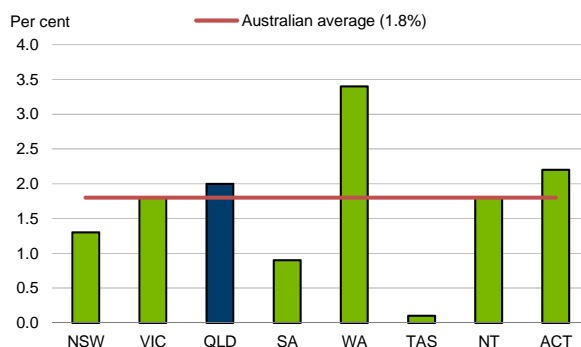
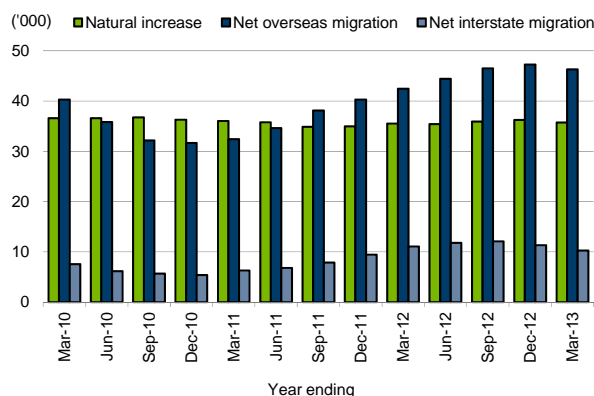


Figure 3: Annual population increase by components of growth, Queensland



¹ ERP and components of population (natural increase, net overseas migration and net interstate migration) quoted in this brief are preliminary for March quarter 2013, revised for quarters September 2011 to December 2012 and final (rebased) for quarters December 2009 to June 2011. Further information is available in the March quarter 2013 edition of the ABS 3101.0 publication on the ABS website.

