

Population and Dwelling Profile

Logan City Council

Updated April 2012

Estimated resident population

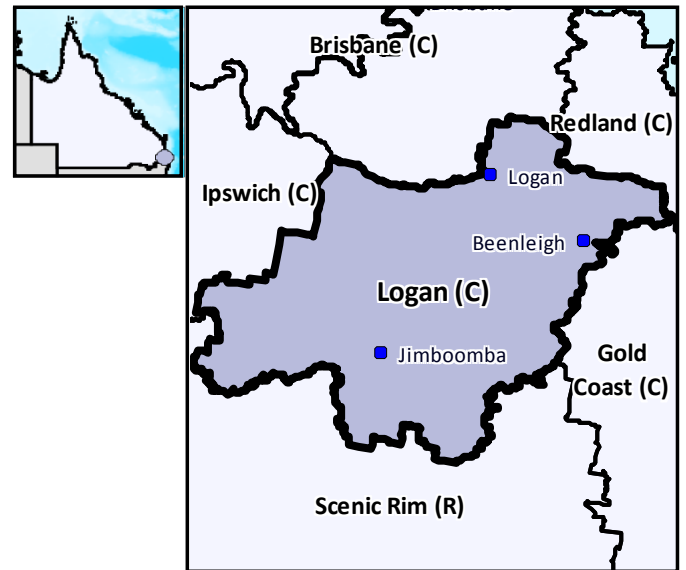
The preliminary estimated resident population of Logan City Council at 30 June 2011 was 287,472 persons, an increase of 5,325 persons or 1.9 per cent over the year. This compares with an increase of 4,587 persons or 1.7 per cent in the year to June 2010 (Table 1 and Figure 1).

Components of population change

In the year to June 2009, natural increase (births minus deaths) accounted for an increase of 3,883 persons while assumed net migration resulted in a gain of 2,789 persons (Table 1 and Figure 2).

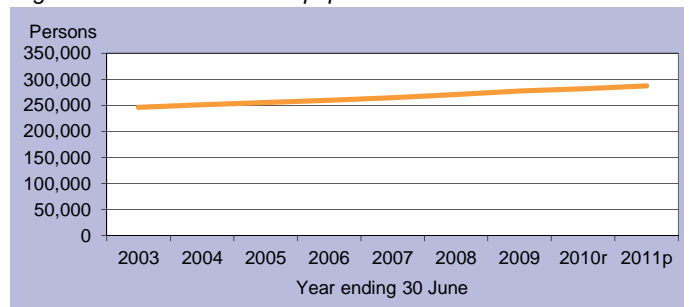
Population projections

Projections released in 2011 indicate that by 2016 the expected population of Logan City Council will be between 313,760 and 342,376 persons (Table 2 and Figure 3). By 2031 this is expected to change to between 393,594 and 523,508 persons (low and high series).



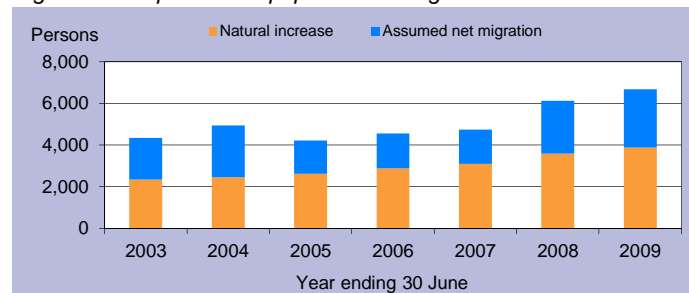
C = City S = Shire R = Regional Council T = Town

Figure 1: Estimated resident population



p = preliminary r = revised

Figure 2: Components of population change



p = preliminary r = revised

Figure 3: Population projections

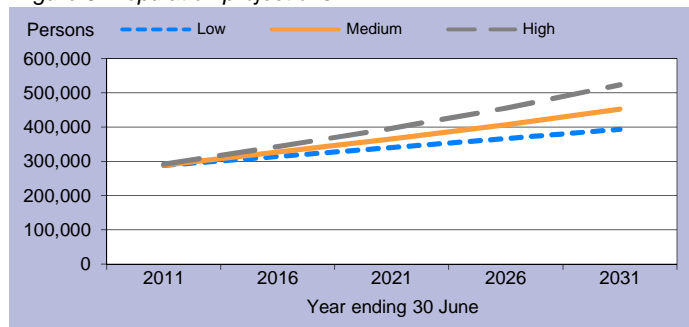


Table 1: Estimated resident population and components of change

Population trends		Annual population change				
As at 30 Jun	Est. resident population	Year to 30 Jun	Natural increase	Assumed net migration	Annual change	
					Total	Per cent
2003	246,321	2,003	2,337	2,008	4,345	1.8
2004	251,254	2004	2,451	2,482	4,933	2.0
2005	255,471	2005	2,619	1,598	4,217	1.7
2006	260,021	2006	2,877	1,673	4,550	1.8
2007	264,761	2007	3,101	1,639	4,740	1.8
2008	270,888	2008	3,582	2,545	6,127	2.3
2009	277,560	2009	3,883	2,789	6,672	2.5
2010r	282,147	2010r	n.y.a.	n.y.a.	4,587	1.7
2011p	287,472	2011p	n.y.a.	n.y.a.	5,325	1.9

p = preliminary r = revised n.y.a. = not available

Table 2: Population projections

	Projected population			Average annual change (medium series)	
	Low series	Medium series	High series	Number	Per cent
2011	287,514	289,010	291,664	5,798	2.1
2016	313,760	326,748	342,376	7,548	2.5
2021	339,765	365,443	395,846	7,739	2.3
2026	366,214	406,631	454,977	8,238	2.2
2031	393,594	452,184	523,508	9,111	2.1

Table 3: Population by age group, Logan (C)

	Age group					Median age
	0-14	15-24	25-44	45-64	65+	
2006	61,621	40,244	75,533	62,806	19,816	32.7
	23.7%	15.5%	29.0%	24.2%	7.6%	
2031*	91,987	59,554	114,665	102,950	83,029	38.1
	20.3%	13.2%	25.4%	22.8%	18.4%	

* Medium series

Age structure

The median age of Logan City Council's population is projected to increase by 5.4 years from a median age of 32.7 years in 2006 to a median age of 38.1 years in 2031 (Table 3 and Figure 4). The median age of Queensland in 2031 is projected to be 40.2 years, under the medium series (Table 4).

Dwelling approvals

There were 2,086 new dwelling approvals in Logan City Council over the year ending December 2011, a decrease of 2.0 per cent from the previous year (2,129) (Table 5). Separate houses made up 65.0 per cent of all new dwelling approvals over the year ending December 2011 (Figure 5).

Table 5: New dwelling approvals*

Year ending	New dwelling approvals		
	Houses	Other	Total
December			
2005	1,023	341	1,364
2006	1,061	245	1,306
2007	1,403	487	1,890
2008	1,439	224	1,663
2009	726	93	819
2010	1,506	623	2,129
2011	1,355	731	2,086
Mar qtr 2011	475	90	565
Jun qtr 2011	459	317	776
Sep qtr 2011	215	100	315
Dec qtr 2011	206	224	430

* Excludes alterations/additions

Figure 5: Dwelling approvals

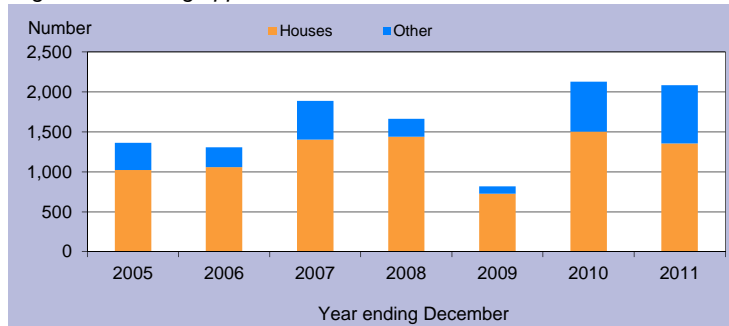
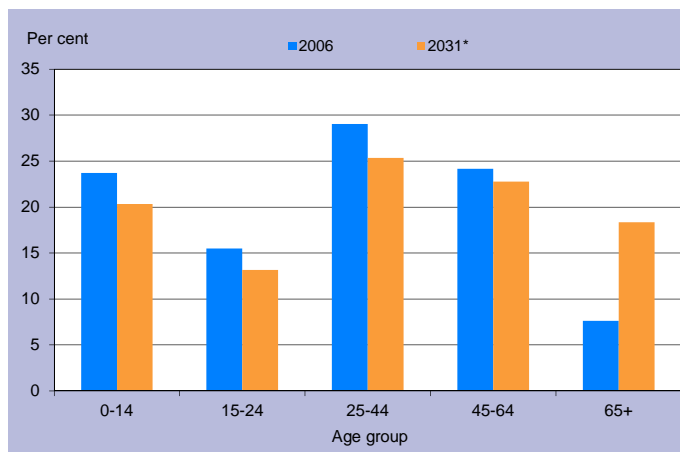


Table 4: Population by age group, Queensland

	Age group					Median age
	0-14	15-24	25-44	45-64	65+	
2006	834,682	578,600	1,169,244	1,013,986	494,396	36.1
	20.4%	14.1%	28.6%	24.8%	12.1%	
2031*	1,205,836	814,688	1,703,235	1,578,741	1,290,350	40.2
	18.3%	12.4%	25.8%	23.9%	19.6%	

* Medium series

Figure 4: Age distribution, Logan (C), 2006 and 2031*



* Medium series

Household size

In 2006, the average household size for all occupied private dwellings in Logan City Council was 2.9 persons. This compares with an average household size of 2.6 for all of Queensland in the same year (Table 6).

Table 6: Average household size by dwelling type

Dwelling type	Average household size			
	Logan (C)			Qld
	1996	2001	2006	2006
Separate house	3.2	3.0	3.0	2.8
Semi-detached, flats, etc	1.9	1.9	2.0	1.8
Other dwellings inc caravans	1.7	1.6	1.6	1.8
All occupied private dwellings	3.0	2.9	2.9	2.6

Sources for the Population and Dwelling Profile:

ABS cat nos 3201.3, 3218.0, 3235.3, 8731.0 (preliminary as at December 2011); ABS unpublished births and deaths data, Census of Population and Housing, 1996, 2001 and 2006; Queensland Government Population Projections, 2011.

You are free to copy, communicate and adapt the work, as long as you attribute the authors. This document is licensed under a Creative Commons Attribution 2.5 Australia licence. To view a copy of this licence, visit <http://creativecommons.org/licenses/by/2.5/au>. To attribute this work, cite Population and Dwelling Profile, Logan City Council, Office of Economic and Statistical Research, Queensland Treasury and Trade.

This profile is based on information available to the Office of Economic and Statistical Research at the time of preparation. It does not necessarily reflect the opinions or views of Queensland Treasury and Trade or the Queensland Government. Any statement, opinion or advice expressed or implied in this report is made in good faith but on the basis that the State of Queensland, and its agents and employees are not liable for any damage or loss whatsoever which may occur in relation to its use by the client or any third party.