

Labour force – Brisbane - West SA4, Dec 2014

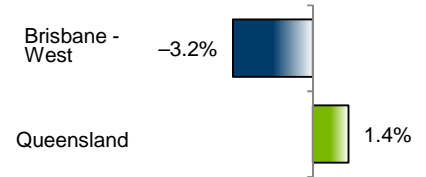
Source: ABS 6291.0.55.001, released 22 January 2015, 10:30 am (AEST)

Table 1: Labour force status, Brisbane - West SA4

	Year ending			Annual change	
	Dec-13	Nov-14	Dec-14	persons	per cent
	— persons —				
Employed, worked:					
Full-time	62,900	60,600	60,800	-2,100	-3.4
Part-time	33,100	33,000	32,100	-1,000	-3.0
Total employed	96,000	93,700	92,900	-3,100	-3.2
Total unemployed	4,900	5,700	5,800	900	18.4
Total labour force	100,900	99,400	98,600	-2,200	-2.2
Not in the labour force	48,500	50,600	51,300	2,800	5.8
Total persons 15+	149,400	150,000	149,900	600	0.4
Participation rate (%)	67.5	66.3	65.8	..	-1.7 (a)
Unemployment rate (%)	4.8	5.7	5.8	..	1.0 (a)

(a) Percentage point change.

Employment growth, annual



Unemployment rate

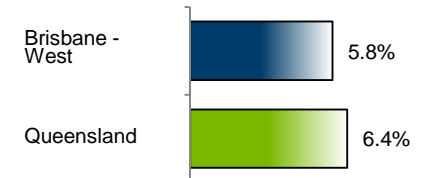


Figure 1: Annual change in employment, Brisbane - West SA4

Key data

Employment (annual change)..... ↓ 3.2%
 Unemployment rate 5.8%
 Unemployment rate (annual change) ↑ 1.0 ppt
 Participation rate..... 65.8%

ppt = percentage point

Main findings

Note: All data in this report are based on a 12-month moving average.

- The number of employed persons in Brisbane - West SA4 in December 2014 was 92,900 persons, a decrease of 3,100 employed persons, or 3.2% over the year (Figure 1).
- The unemployment rate in Brisbane - West SA4 in December 2014 was 5.8 per cent, an increase of 1.0 percentage points over the year. The unemployment rate for this area was the tenth-lowest of all 19 SA4s within Queensland (Figure 2).
- The participation rate in Brisbane - West SA4 in December 2014 was 65.8 per cent, a decrease of 1.7 percentage points over the year (Table 1).

SA4 = Statistical Area Level 4 (ASGS 2011 edition)

Notes (refer to website for more detailed notes):

Data for Queensland as a whole are provided for reference purposes only.

The labour force statistics presented in this brief are on a sample basis and will include a sampling error.

Totals may differ due to rounding. Figures are rounded to nearest 100 persons. Calculations are based on pre-rounded figures.

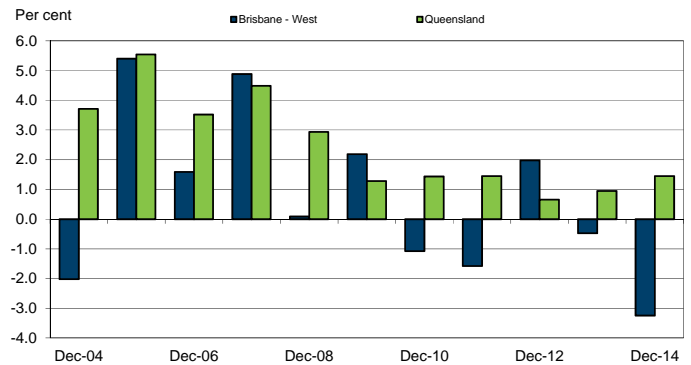


Figure 2: Unemployment rate by SA4, December 2014

