

# Labour force – Cairns SA4, Dec 2014

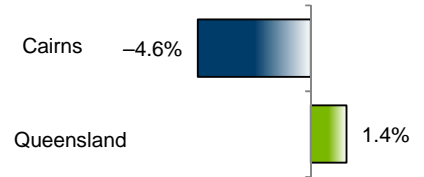
Source: ABS 6291.0.55.001, released 22 January 2015, 10:30 am (AEST)

**Table 1: Labour force status, Cairns SA4**

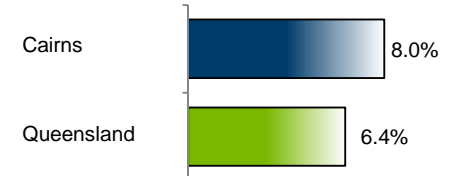
	Year ending			Annual change	
	Dec-13	Nov-14	Dec-14	persons	per cent
	— persons —				
Employed, worked:					
Full-time	79,200	75,200	75,100	-4,000	-5.1
Part-time	34,800	33,800	33,600	-1,200	-3.4
Total employed	114,000	109,000	108,700	-5,200	-4.6
Total unemployed	9,700	9,600	9,500	-200	-1.9
Total labour force	123,600	118,600	118,200	-5,400	-4.4
Not in the labour force	65,000	74,000	74,800	9,800	15.0
Total persons 15+	188,600	192,600	193,000	4,400	2.3
Participation rate (%)	65.5	61.6	61.2	..	-4.3 (a)
Unemployment rate (%)	7.8	8.1	8.0	..	0.2 (a)

(a) Percentage point change.

**Employment growth, annual**



**Unemployment rate**



**Figure 1: Annual change in employment, Cairns SA4**

## Key data

Employment (annual change)..... ↓ 4.6%  
 Unemployment rate ..... 8.0%  
 Unemployment rate (annual change) ..... ↑ 0.2 ppt  
 Participation rate..... 61.2%

ppt = percentage point

## Main findings

Note: All data in this report are based on a 12-month moving average.

- The number of employed persons in Cairns SA4 in December 2014 was 108,700 persons, a decrease of 5,200 employed persons, or 4.6% over the year (Figure 1).
- The unemployment rate in Cairns SA4 in December 2014 was 8.0 per cent, an increase of 0.2 percentage point over the year. The unemployment rate for this area was the sixth-highest of all 19 SA4s within Queensland (Figure 2).
- The participation rate in Cairns SA4 in December 2014 was 61.2 per cent, a decrease of 4.3 percentage points over the year (Table 1).

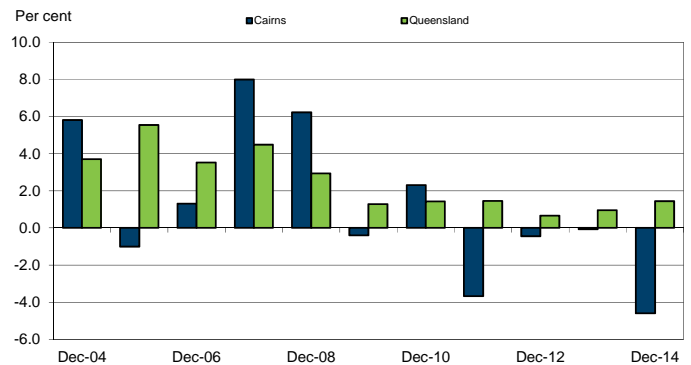
SA4 = Statistical Area Level 4 (ASGS 2011 edition)

Notes (refer to website for more detailed notes):

Data for Queensland as a whole are provided for reference purposes only.

The labour force statistics presented in this brief are on a sample basis and will include a sampling error.

Totals may differ due to rounding. Figures are rounded to nearest 100 persons. Calculations are based on pre-rounded figures.



**Figure 2: Unemployment rate by SA4, December 2014**

