

Labour force – Fitzroy SA4, Mar 2015

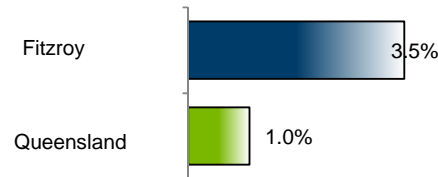
Source: ABS 6291.0.55.001, released 23 April 2015, 11:30 am (AEST)

Table 1: Labour force status, Fitzroy SA4

| | Year ending | | | Annual change | |
|-------------------------|-------------|---------|---------|---------------|----------|
| | Mar-14 | Feb-15 | Mar-15 | persons | per cent |
| | — persons — | | | | |
| Employed, worked: | | | | | |
| Full-time | 88,100 | 88,900 | 88,400 | 300 | 0.3 |
| Part-time | 25,400 | 29,100 | 29,100 | 3,700 | 14.5 |
| Total employed | 113,500 | 118,000 | 117,500 | 4,000 | 3.5 |
| Total unemployed | 7,500 | 6,700 | 6,900 | -600 | -7.9 |
| Total labour force | 121,100 | 124,700 | 124,500 | 3,400 | 2.8 |
| Not in the labour force | 54,600 | 53,100 | 53,500 | -1,100 | -2.1 |
| Total persons 15+ | 175,700 | 177,800 | 178,000 | 2,300 | 1.3 |
| Participation rate (%) | 68.9 | 70.1 | 69.9 | .. | 1.0 (a) |
| Unemployment rate (%) | 6.2 | 5.4 | 5.6 | .. | -0.6 (a) |

(a) Percentage point change.

Employment growth, annual



Unemployment rate

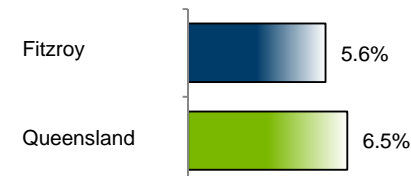


Figure 1: Annual change in employment, Fitzroy SA4

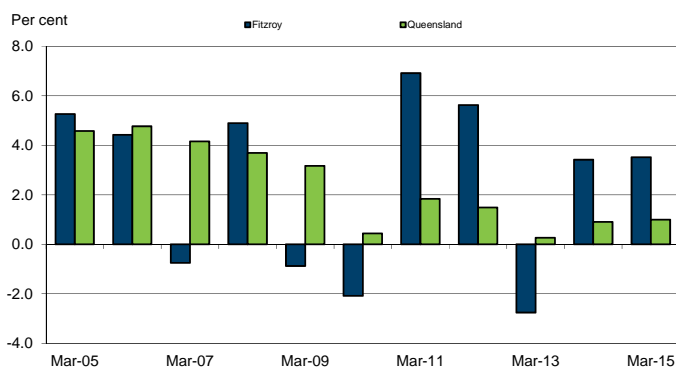
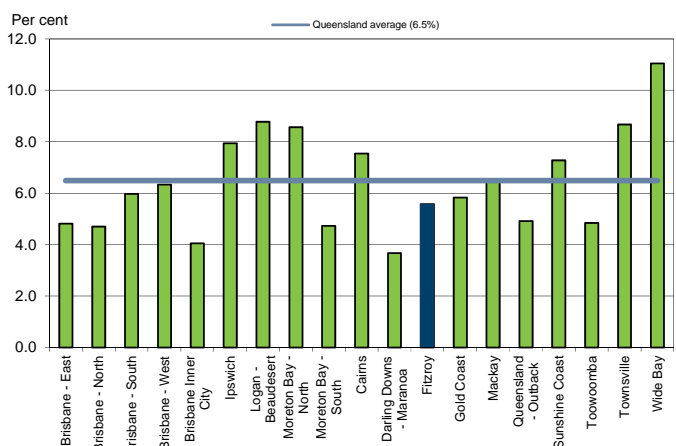


Figure 2: Unemployment rate by SA4, March 2015



Key data

Employment (annual change)..... ↑ 3.5%
 Unemployment rate 5.6%
 Unemployment rate (annual change) ↓ 0.6 ppt
 Participation rate..... 69.9%

ppt = percentage point

Main findings

Note: All data in this report are based on a 12-month moving average.

- The number of employed persons in Fitzroy SA4 in March 2015 was 117,500 persons, an increase of 4,000 employed persons, or 3.5% over the year (Figure 1).
- The unemployment rate in Fitzroy SA4 in March 2015 was 5.6 per cent, a decrease of 0.6 percentage point over the year. The unemployment rate for this area was the eighth-lowest of all 19 SA4s within Queensland (Figure 2).
- The participation rate in Fitzroy SA4 in March 2015 was 69.9 per cent, an increase of 1.0 percentage points over the year (Table 1).

SA4 = Statistical Area Level 4 (ASGS 2011 edition)

Notes (refer to website for more detailed notes):

Data for Queensland as a whole are provided for reference purposes only.

The labour force statistics presented in this brief are on a sample basis and will include a sampling error.

Totals may differ due to rounding. Figures are rounded to nearest 100 persons. Calculations are based on pre-rounded figures.

