

Labour force – Sunshine Coast SA4, Dec 2014

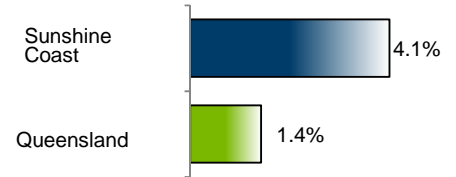
Source: ABS 6291.0.55.001, released 22 January 2015, 10:30 am (AEST)

Table 1: Labour force status, Sunshine Coast SA4

	Year ending			Annual change	
	Dec-13	Nov-14	Dec-14	persons	per cent
	— persons —				
				persons	per cent
Employed, worked:					
Full-time	97,300	99,600	99,400	2,100	2.2
Part-time	59,700	64,500	64,000	4,300	7.2
Total employed	157,000	164,200	163,400	6,400	4.1
Total unemployed	9,800	13,100	13,100	3,300	33.8
Total labour force	166,800	177,200	176,400	9,700	5.8
Not in the labour force	103,000	97,700	99,000	-4,000	-3.9
Total persons 15+	269,800	274,900	275,400	5,600	2.1
Participation rate (%)	61.8	64.5	64.1	..	2.2 (a)
Unemployment rate (%)	5.9	7.4	7.4	..	1.5 (a)

(a) Percentage point change.

Employment growth, annual



Unemployment rate

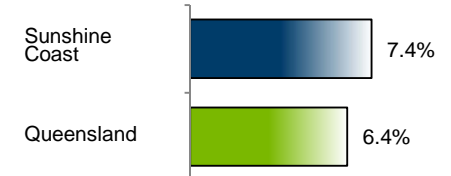


Figure 1: Annual change in employment, Sunshine Coast SA4

Key data

Employment (annual change)..... ↑ 4.1%
 Unemployment rate 7.4%
 Unemployment rate (annual change) ↑ 1.5 ppt
 Participation rate..... 64.1%

ppt = percentage point

Main findings

Note: All data in this report are based on a 12-month moving average.

- The number of employed persons in Sunshine Coast SA4 in December 2014 was 163,400 persons, an increase of 6,400 employed persons, or 4.1% over the year (Figure 1).
- The unemployment rate in Sunshine Coast SA4 in December 2014 was 7.4 per cent, an increase of 1.5 percentage points over the year. The unemployment rate for this area was the seventh-highest of all 19 SA4s within Queensland (Figure 2).
- The participation rate in Sunshine Coast SA4 in December 2014 was 64.1 per cent, an increase of 2.2 percentage points over the year (Table 1).

SA4 = Statistical Area Level 4 (ASGS 2011 edition)

Notes (refer to website for more detailed notes):

Data for Queensland as a whole are provided for reference purposes only.

The labour force statistics presented in this brief are on a sample basis and will include a sampling error.

Totals may differ due to rounding. Figures are rounded to nearest 100 persons. Calculations are based on pre-rounded figures.

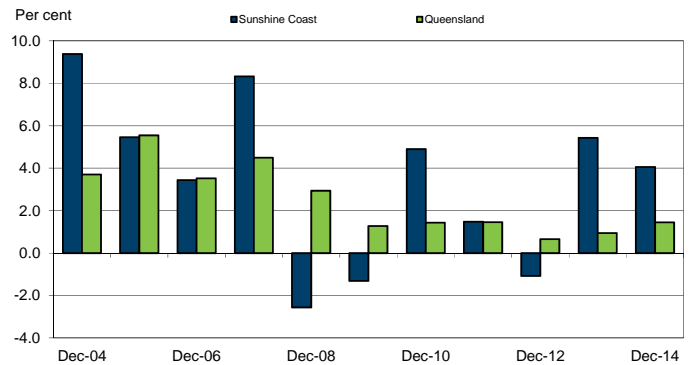


Figure 2: Unemployment rate by SA4, December 2014

