

Regional labour force – Toowoomba SA4, Apr 18

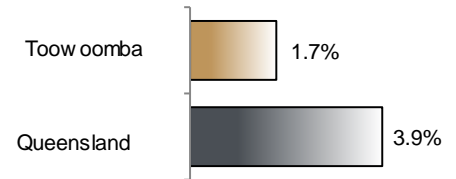
Source: ABS 6291.0.55.001, released 24 May 2018, 11:30 am (AEST)

Table 1 Labour force status, Toowoomba SA4

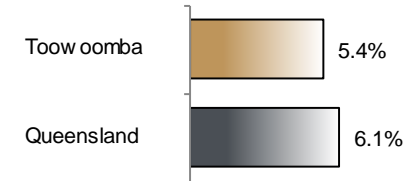
| | Year ending | | | Annual change | |
|-------------------------|-------------|---------|---------|---------------|----------|
| | Apr 17 | Mar 18 | Apr 18 | persons | % |
| | — persons — | | | persons | % |
| Total employed | 73,600 | 74,700 | 74,900 | 1,300 | 1.7 |
| Total unemployed | 4,300 | 4,300 | 4,300 | 0 | 0.3 |
| Total labour force | 77,900 | 79,000 | 79,200 | 1,300 | 1.7 |
| Not in the labour force | 43,700 | 44,200 | 44,100 | 400 | 0.9 |
| Total persons 15+ | 121,600 | 123,200 | 123,300 | 1,700 | 1.4 |
| Participation rate (%) | 64.1 | 64.2 | 64.2 | .. | 0.2 (a) |
| Unemployment rate (%) | 5.5 | 5.5 | 5.4 | .. | -0.1 (a) |

(a) Percentage point change.

Employment growth, annual



Unemployment rate



Key data

Employment (annual change)..... ↑ 1.7%
 Unemployment rate 5.4%
 Unemployment rate (annual change) ↓ 0.1 ppt
 Participation rate..... 64.2%

ppt = percentage point

Main findings

Note: All data in this brief are based on 12-month moving averages. This approach is supported by ABS advice on analysis of regional labour force estimates (see Table 16(b) of *Labour Force, Australia, Detailed* (cat. no. 6291.0.55.001)).

- The number of employed persons in Toowoomba SA4 in April 2018 was 74,900 persons, an increase of 1,300 employed persons, or 1.7% over the year (Figure 1).
- The unemployment rate in Toowoomba SA4 in April 2018 was 5.4 per cent, a decrease of 0.1 percentage point over the year. The unemployment rate for this area was the tenth-lowest of all 19 SA4s within Queensland (Figure 2).
- The participation rate in Toowoomba SA4 in April 2018 was 64.2 per cent, an increase of 0.2 percentage point over the year (Table 1).

SA4 = Statistical Area Level 4 (ASGS 2011 edition)

Notes (refer to website for more detailed notes):

Data for Queensland as a whole are provided for reference purposes only.

The labour force statistics presented in this brief are on a sample basis and will include a sampling error.

Totals may differ due to rounding. Figures are rounded to nearest 100 persons. Calculations are based on pre-rounded figures.

Figure 1 Annual change in employment, Toowoomba SA4

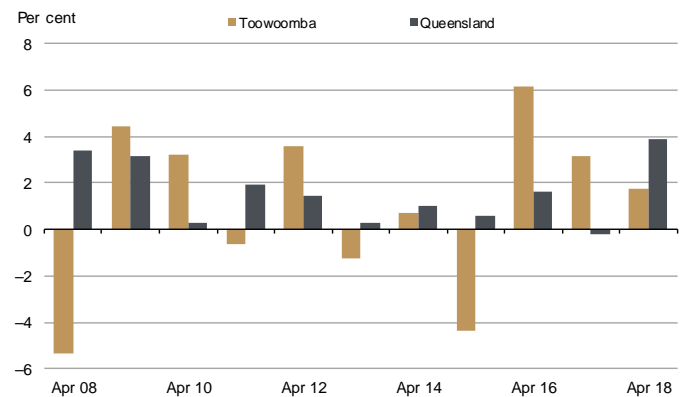


Figure 2 Unemployment rate by SA4, April 2018

