

Labour force – Townsville SA4, Mar 2015

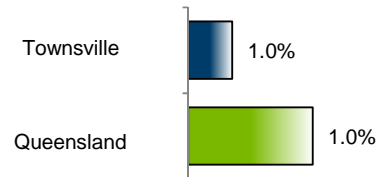
Source: ABS 6291.0.55.001, released 23 April 2015, 11:30 am (AEST)

Table 1: Labour force status, Townsville SA4

	Year ending			Annual change	
	Mar-14	Feb-15	Mar-15	persons	per cent
	— persons —				
Employed, worked:					
Full-time	81,100	78,700	78,900	-2,200	-2.7
Part-time	29,800	32,600	33,000	3,300	11.0
Total employed	110,900	111,200	112,000	1,100	1.0
Total unemployed	7,700	10,400	10,600	3,000	38.5
Total labour force	118,600	121,600	122,600	4,000	3.4
Not in the labour force	60,900	61,200	60,400	-500	-0.8
Total persons 15+	179,500	182,800	183,000	3,500	2.0
Participation rate (%)	66.1	66.5	67.0	..	0.9 (a)
Unemployment rate (%)	6.5	8.5	8.7	..	2.2 (a)

(a) Percentage point change.

Employment growth, annual



Unemployment rate

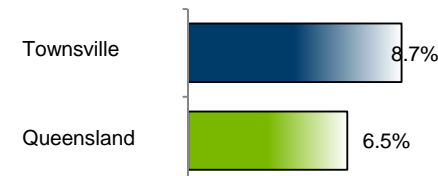


Figure 1: Annual change in employment, Townsville SA4

Key data

Employment (annual change)..... ↑ 1.0%
 Unemployment rate 8.7%
 Unemployment rate (annual change) ↑ 2.2 ppt
 Participation rate..... 67.0%

ppt = percentage point

Main findings

Note: All data in this report are based on a 12-month moving average.

- The number of employed persons in Townsville SA4 in March 2015 was 112,000 persons, an increase of 1,100 employed persons, or 1.0% over the year (Figure 1).
- The unemployment rate in Townsville SA4 in March 2015 was 8.7 per cent, an increase of 2.2 percentage points over the year. The unemployment rate for this area was the third-highest of all 19 SA4s within Queensland (Figure 2).
- The participation rate in Townsville SA4 in March 2015 was 67.0 per cent, an increase of 0.9 percentage point over the year (Table 1).

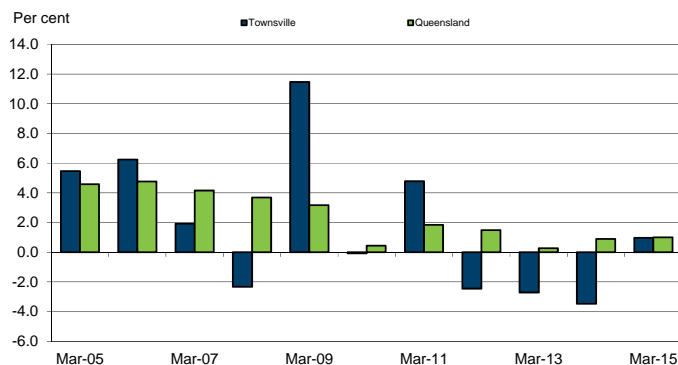
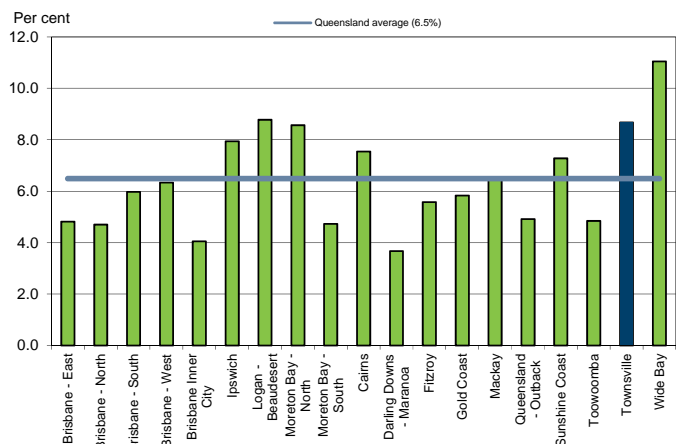


Figure 2: Unemployment rate by SA4, March 2015



SA4 = Statistical Area Level 4 (ASGS 2011 edition)

Notes (refer to website for more detailed notes):

Data for Queensland as a whole are provided for reference purposes only.

The labour force statistics presented in this brief are on a sample basis and will include a sampling error.

Totals may differ due to rounding. Figures are rounded to nearest 100 persons. Calculations are based on pre-rounded figures.

