

Regional labour force – Townsville SA4, Apr 18

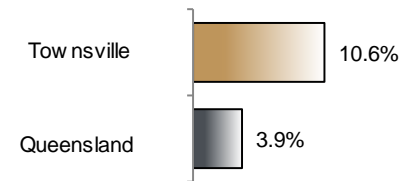
Source: ABS 6291.0.55.001, released 24 May 2018, 11:30 am (AEST)

Table 1 Labour force status, Townsville SA4

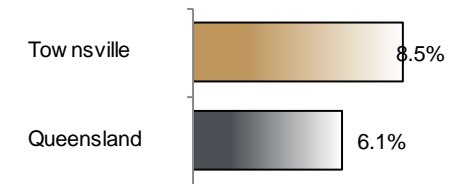
	Year ending			Annual change	
	Apr 17	Mar 18	Apr 18	persons	%
	— persons —			persons	%
Total employed	96,800	106,600	107,000	10,300	10.6
Total unemployed	11,700	9,900	10,000	-1,700	-14.7
Total labour force	108,400	116,500	117,000	8,500	7.9
Not in the labour force	73,500	66,600	66,300	-7,200	-9.8
Total persons 15+	181,900	183,100	183,200	1,400	0.7
Participation rate (%)	59.6	63.6	63.8	..	4.2 (a)
Unemployment rate (%)	10.8	8.5	8.5	..	-2.3 (a)

(a) Percentage point change.

Employment growth, annual



Unemployment rate



Key data

Employment (annual change)..... ↑ 10.6%
 Unemployment rate 8.5%
 Unemployment rate (annual change) ↓ 2.3 ppt
 Participation rate..... 63.8%

ppt = percentage point

Main findings

Note: All data in this brief are based on 12-month moving averages. This approach is supported by ABS advice on analysis of regional labour force estimates (see Table 16(b) of *Labour Force, Australia, Detailed* (cat. no. 6291.0.55.001)).

- The number of employed persons in Townsville SA4 in April 2018 was 107,000 persons, an increase of 10,300 employed persons, or 10.6% over the year (Figure 1).
- The unemployment rate in Townsville SA4 in April 2018 was 8.5 per cent, a decrease of 2.3 percentage points over the year. The unemployment rate for this area was the fourth-highest of all 19 SA4s within Queensland (Figure 2).
- The participation rate in Townsville SA4 in April 2018 was 63.8 per cent, an increase of 4.2 percentage points over the year (Table 1).

SA4 = Statistical Area Level 4 (ASGS 2011 edition)

Notes (refer to website for more detailed notes):

Data for Queensland as a whole are provided for reference purposes only.

The labour force statistics presented in this brief are on a sample basis and will include a sampling error.

Totals may differ due to rounding. Figures are rounded to nearest 100 persons. Calculations are based on pre-rounded figures.

Figure 1 Annual change in employment, Townsville SA4

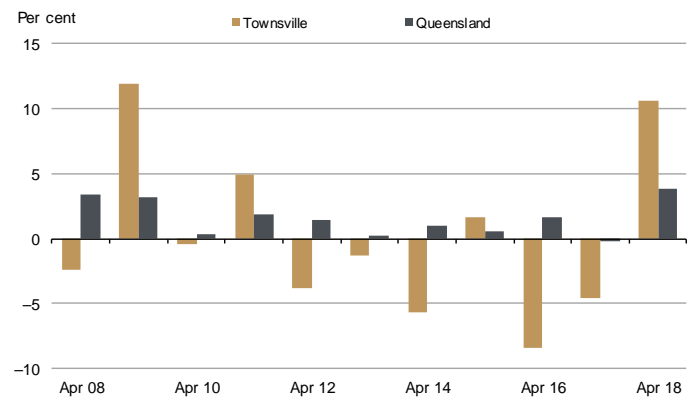


Figure 2 Unemployment rate by SA4, April 2018

