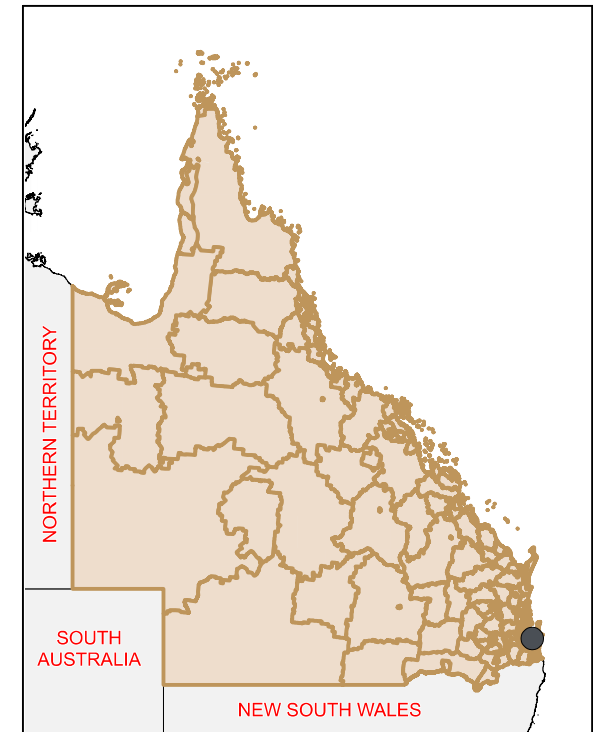
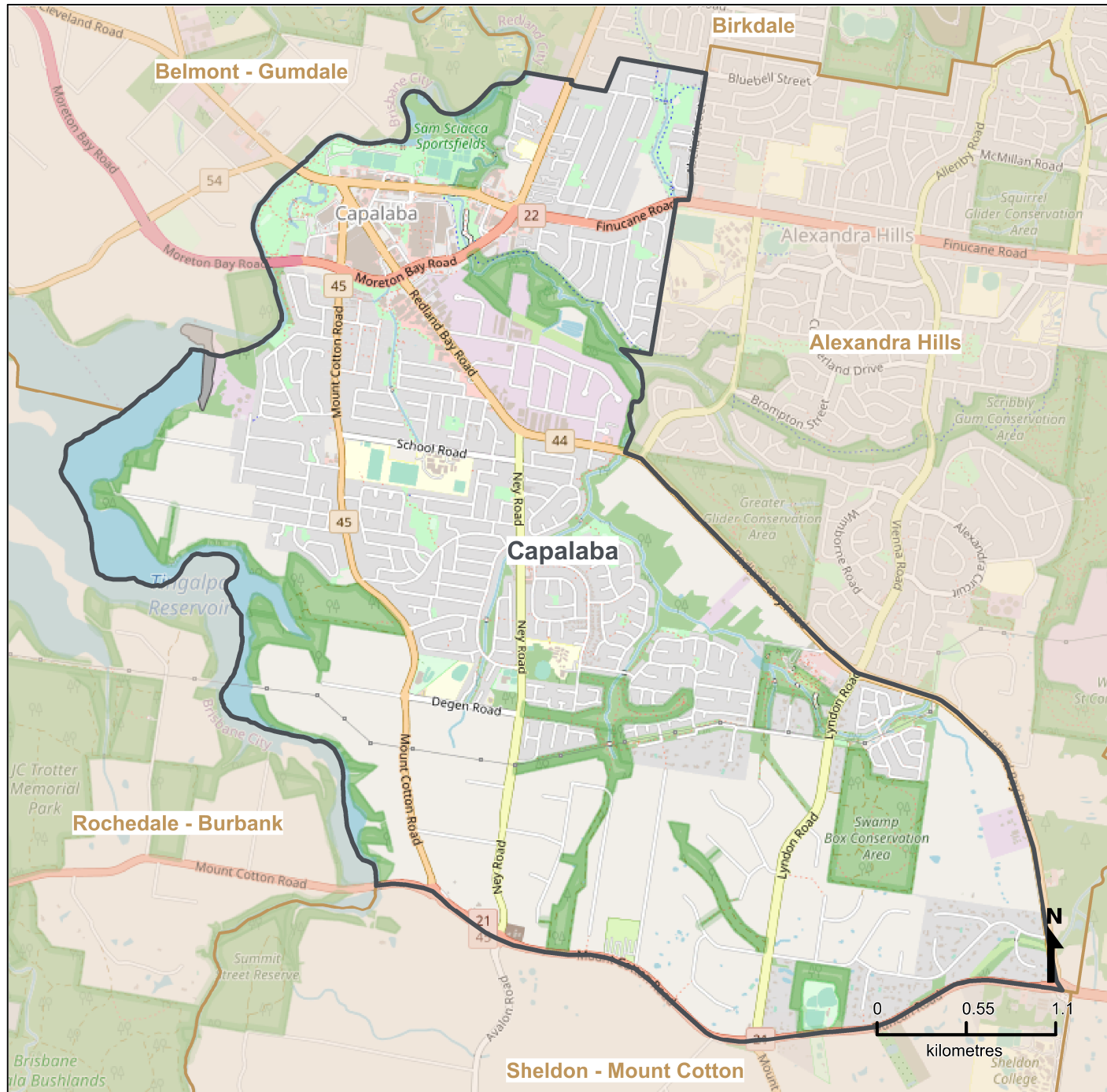




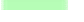



Queensland Statistical Areas, Level 2 (SA2), 2021 - Capalaba (ASGS Code 301011004)



LEGEND

-  Selected SA2
-  Neighbouring SA2s
- Map features**
-  Main roads
-  Railways
-  Parks
-  Waterways

Map produced by Queensland Government's Office,
Queensland Treasury
<https://www.qqso.qld.gov.au/geographies-maps/maps>

Data sourced from ABS 1270.0.55.001
© OpenStreetMap contributors (<https://openstreetmap.org/>)

 <https://creativecommons.org/licenses/by/4.0>

© The State of Queensland (Queensland Treasury) 2021