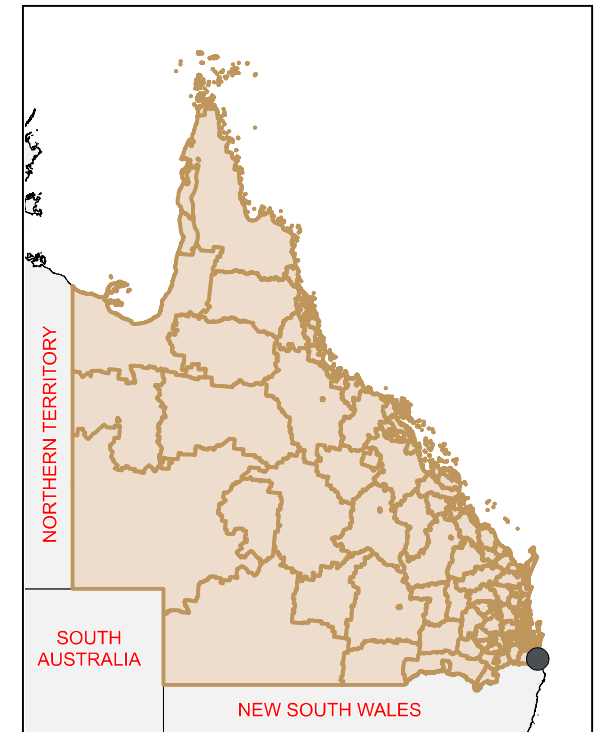
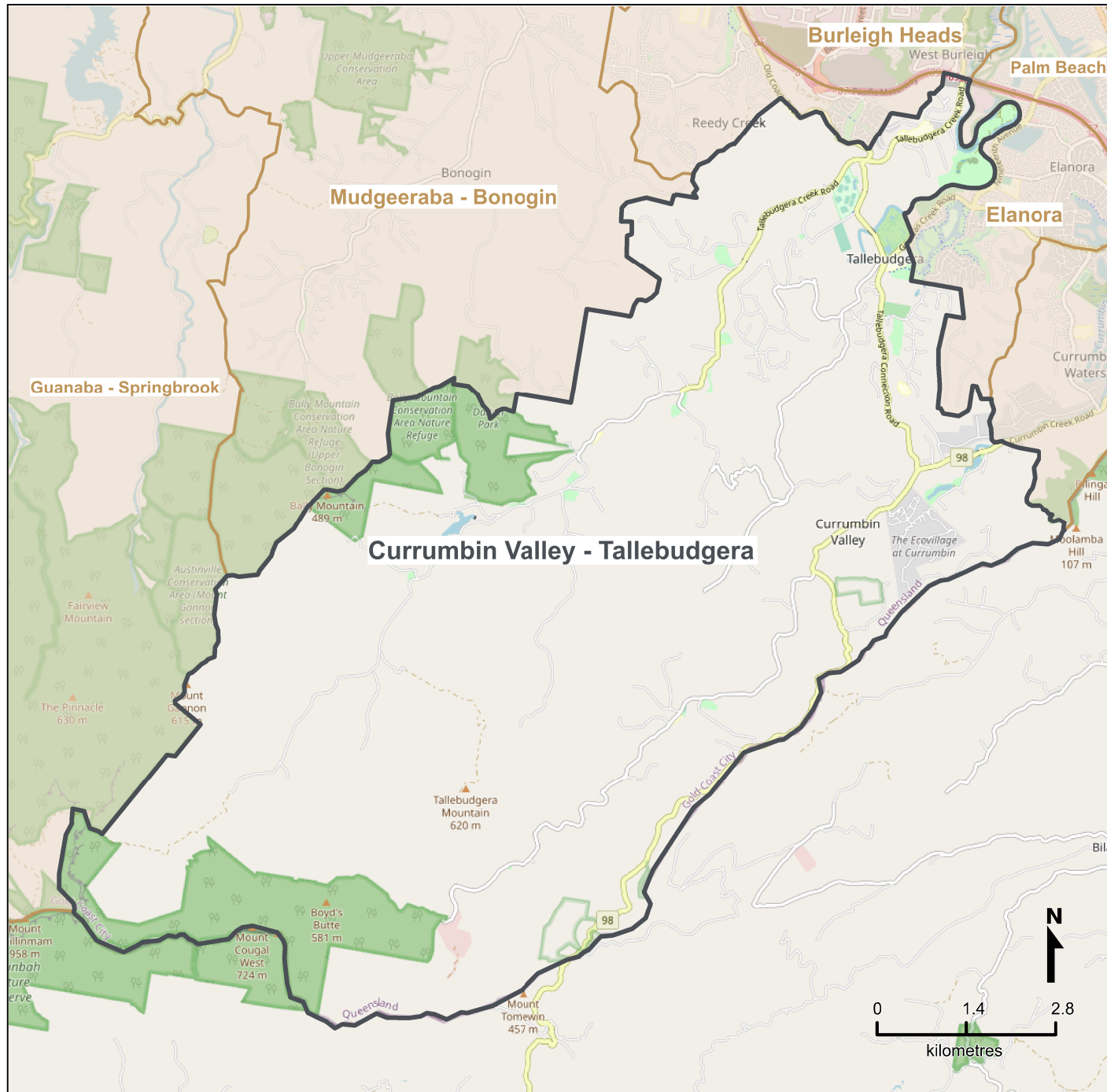


# Queensland Statistical Areas, Level 2 (SA2), 2021 - Currumbin Valley - Tallebudgera (ASGS Code 309051243)



## LEGEND

- Selected SA2
  - Neighbouring SA2s
- Map features**
- Main roads
  - Parks
  - Railways
  - Waterways

Map produced by Queensland Government's Office,  
Queensland Treasury  
<https://www.qgso.qld.gov.au/geographies-maps/maps>

Data sourced from ABS 1270.0.55.001  
© OpenStreetMap contributors (<https://openstreetmap.org/>)

<https://creativecommons.org/licenses/by/4.0>

© The State of Queensland (Queensland Treasury) 2021