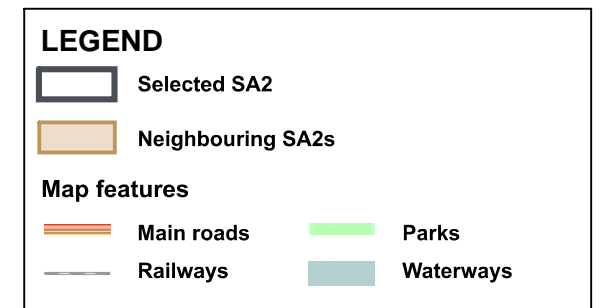
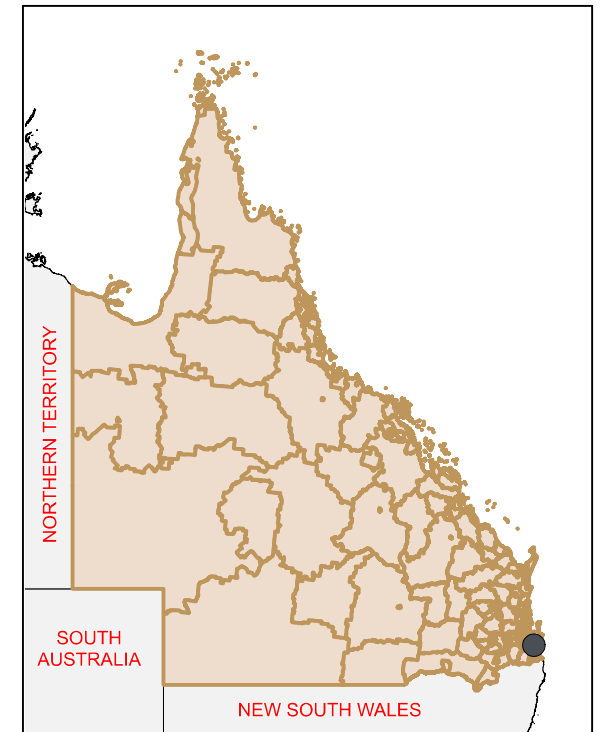
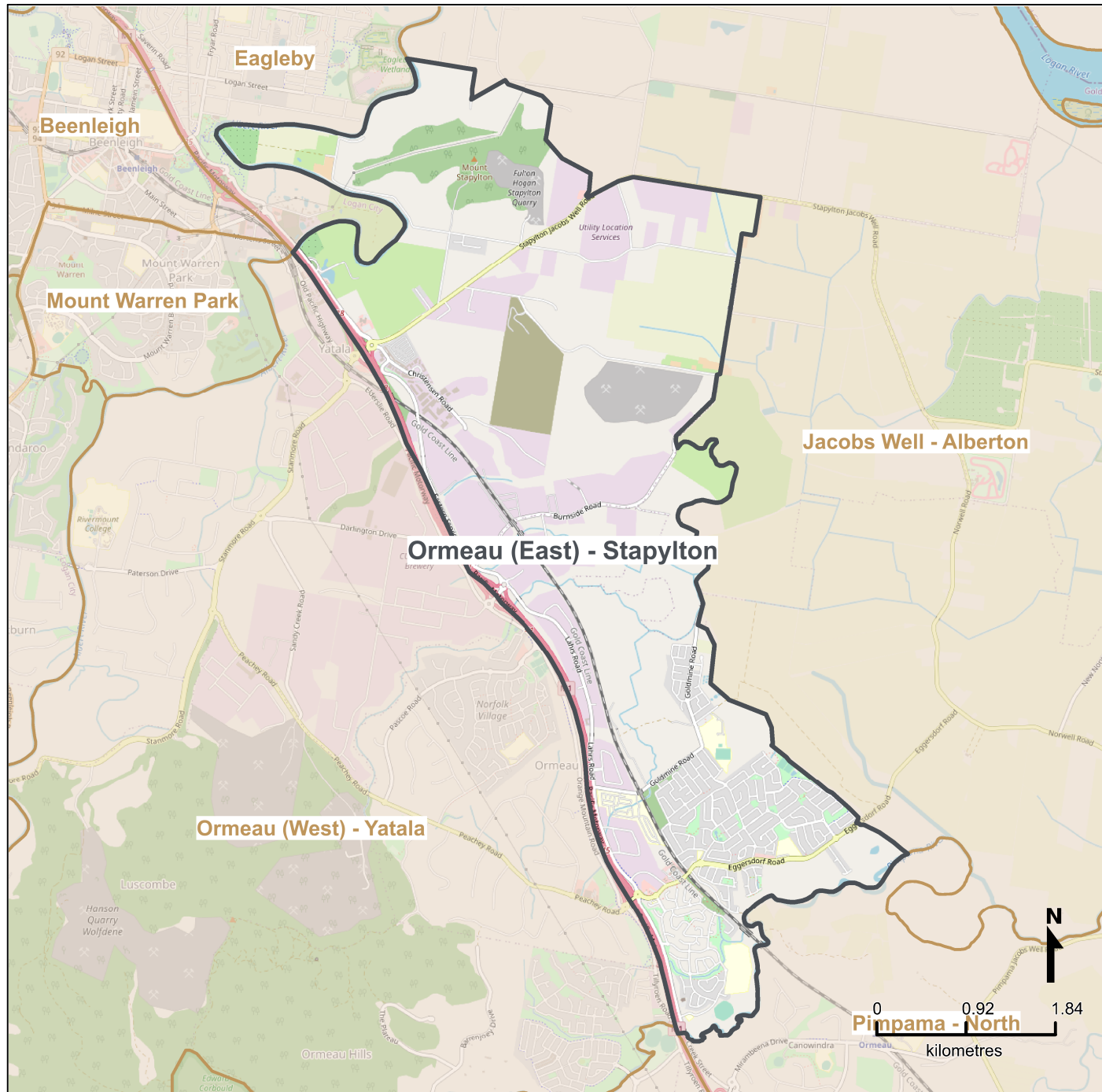


Queensland Statistical Areas, Level 2 (SA2), 2021 - Ormeau (East) - Stapylton (ASGS Code 309071552)



Map produced by Queensland Government's Office, Queensland Treasury
<https://www.qgso.qld.gov.au/geographies-maps/maps>

Data sourced from ABS 1270.0.55.001
 © OpenStreetMap contributors (<https://openstreetmap.org/>)

<https://creativecommons.org/licenses/by/4.0>

© The State of Queensland (Queensland Treasury) 2021