

# Rebased Estimated Resident Population, Queensland, 2021

Source: ABS *National, state and territory population*, released 28 June 2022

Following each Census, the Australian Bureau of Statistics (ABS) revises its official estimates of the resident population (ERP) to improve their accuracy. On 28 June 2022, the ABS released preliminary rebased national and state/territory ERP for 30 June 2021, based on 2021 Census results. The previously published estimate for 30 June 2021 was based on the 2016 Census results and adjusted for births, deaths and migration occurring during the intercensal years. In this brief, the difference between the rebased ERP and the unrebased ERP is known as the intercensal difference.

**Please note:** ERP figures are different to the Census count of persons by place of usual residence. ERP figures include adjustments to account for: Census undercount/overcount; people overseas at Census time; and births and deaths that occurred between 30 June and the Census date (10 August).

## Commentary

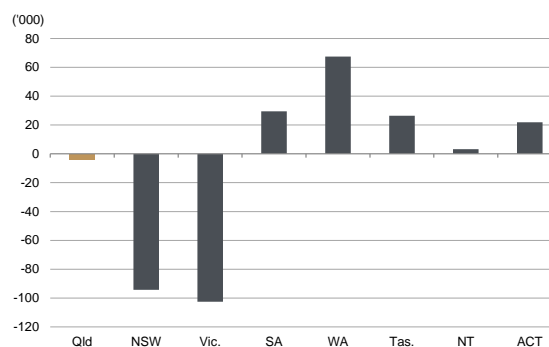
- Queensland's rebased ERP at 30 June 2021 was 5,217,653. This was -4,026 persons, or 0.1% lower than the revised unrebased ERP (5,221,679).
- The rebased population estimates for Queensland at 30 June for the five years from 2017 to 2021 were larger than the unrebased estimates for the first three years, and smaller for the latter two years (Table 1).

**Table 1 Estimated resident population at 30 June, Queensland**

	Unrebased	Rebased <sup>(a)</sup>	Intercensal difference — persons —
2017	4,927,629	4,928,374	745
2018	5,009,424	5,010,502	1,078
2019	5,093,884	5,094,718	834
2020 <sup>(b)</sup>	5,175,245	5,175,003	-242
2021 <sup>(b)</sup>	5,221,679	5,217,653	-4,026

- Queensland's population growth rate during the year to 30 June 2021 was estimated to have been 0.8%.
- Queensland had the second-smallest absolute intercensal difference among the states and territories of Australia at 30 June 2021 (Figure 1).
- Australia's rebased ERP for 30 June 2021 (25,688,079 persons) was 0.2% lower than the unrebased ERP (25,740,290).
- Rebased ERP figures indicate that 20.3% of the Australian population lived in Queensland at 30 June 2021. This was not materially different to the previous estimate.

**Figure 1 Intercensal difference, Australian states and territories, 30 June 2021**



- Natural increase (147,234 persons) was the largest component of population change in Queensland over the five-year period to 30 June 2021, followed by net interstate migration (121,851) and net overseas migration (107,442) (Table 2).

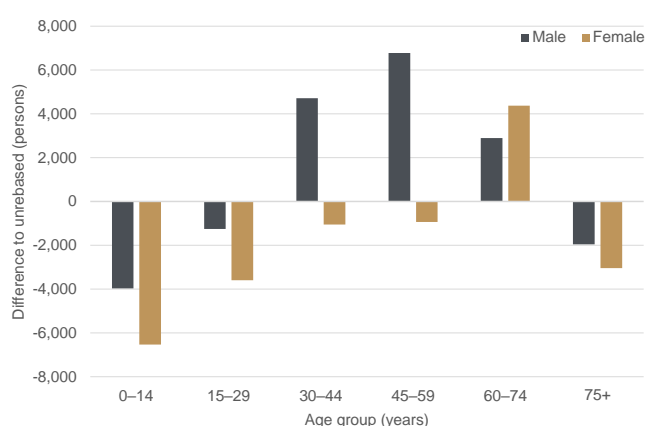
**Table 2 Components of population change, Queensland, 30 June 2016 to 30 June 2021**

	— persons —
ERP, 30 June 2016	4,845,152
Births	305,157
Deaths	-157,923
<b>Natural Increase</b>	147,234
Overseas arrivals <sup>(c)</sup>	372,756
Overseas departures <sup>(c)</sup>	-265,314
<b>Net overseas migration</b>	107,442
Interstate arrivals <sup>(c)</sup>	523,982
Interstate departures <sup>(c)</sup>	-402,131
<b>Net interstate migration</b>	121,851
<b>Intercensal difference</b>	-4,026
<b>Total population growth (5 years)<sup>(d)</sup></b>	372,501
<b>Average annual growth rate (%)</b>	1.5
ERP, 30 June 2021 <sup>(a)</sup>	5,217,653

- Preliminary rebased using 2021 Census results and subject to revision.
- Based on the sum of components of population change (ABS *National, state and territory population*, Dec 2021).
- Those arrivals and departures that contribute to net overseas migration or net interstate migration.
- Components of population growth were not rebased according to census results. As such, they do not sum to total recorded population change.

- Males accounted for 7,205 of the difference in the estimates, while there was an overall downward revision to the number of females -10,785.
- By age, most of the intercensal revision was in the 0-14 age group with a rebased figure 10,500 persons lower than the unrebased figure (Figure 2).
- Downward revisions were also recorded for the 15-29 years age group and the oldest age group (75 years and over), both around -5,000 lower in the rebased estimates.
- Upward adjustments were recorded in the broad age groups between 30 and 74 years, with the largest increase in the 60-74 years age group (adjusted up by over 7,000 persons).

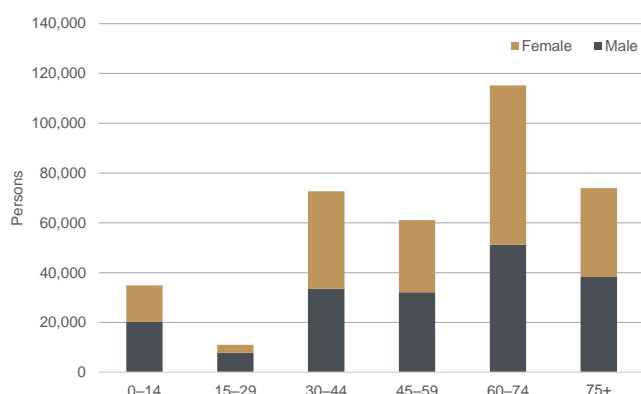
**Figure 2 Difference in estimated resident population at 30 June 2021, by age group and sex**



**Population growth since 2016**

- The rebased population estimates confirm that all age groups experienced growth since 2016, with the 60-74 years age group experiencing the largest absolute growth of 105,568 (Figure 3).
- In comparison, the 75 years and over year age group experienced the fastest 5-year growth, up by 20.2%.

**Figure 3 Population change by age and sex, Queensland, 2016 to 2021**



**Technical notes**

The intercensal difference is a measure of the accuracy of the population estimates, and is the net combined effect of various factors, including

- the adjustments to derive population estimates (from census counts) at the beginning and end of the period
- the components of change (births, deaths, migration) during the period.

Negative numbers mean that the unrebased ERP overestimated the population, and hence the population was revised downwards to correct the figure in the rebased ERP.

**Rebasing ERP**

The final rebased ERP for 30 June 2021 is constructed from the 2021 Census count in three main steps:

1. *Moving people back home to where they usually live.*

In Census, people are counted by their place of usual residence rather than their place of enumeration, which accounts for interstate visitors and removes overseas visitors.

2. *Including people who have been missed or counted more than once in the Census.*

This adjusts for undercount and overcount based on results from the 2021 Post Enumeration Survey and adds in Australian residents temporarily overseas on Census night.

3. *Backdating from Census night (10 August) to 30 June.*

This involves:

- subtracting births
- adding deaths
- accounting for both interstate and overseas migration during that period.