

Regional labour force – Toowoomba SA4, Aug 19

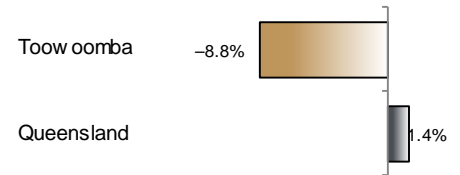
Source: ABS 6291.0.55.001, released 26 September 2019, 11:30 am (AEST)

Table 1 Labour force status, Toowoomba SA4

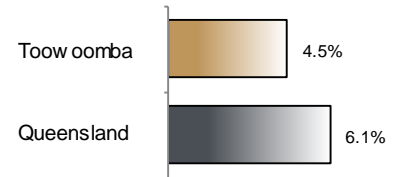
	Year ending			Annual change	
	Aug 18	Jul 19	Aug 19	persons	%
	— persons —				
Total employed	75,700	70,400	69,000	-6,700	-8.8
Total unemployed	4,300	3,500	3,300	-1,000	-23.0
Total labour force	80,000	74,000	72,300	-7,700	-9.6
Not in the labour force	44,000	51,900	53,700	9,800	22.2
Total persons 15+	124,000	125,900	126,100	2,100	1.7
Participation rate (%)	64.5	58.7	57.4	..	-7.2 (a)
Unemployment rate (%)	5.3	4.8	4.5	..	-0.8 (a)

(a) Percentage point change.

Employment growth, annual



Unemployment rate



Key data

Employment (annual change)..... ↓ 8.8%
 Unemployment rate 4.5%
 Unemployment rate (annual change) ↓ 0.8 ppt
 Participation rate 57.4%

ppt = percentage point

Main findings

Note: All data in this brief are based on 12-month moving averages. This approach is supported by ABS advice on analysis of regional labour force estimates (see Table 16(b) of *Labour Force, Australia, Detailed* (cat. no. 6291.0.55.001)).

- The number of employed persons in Toowoomba SA4 in August 2019 was 69,000 persons, a decrease of 6,700 employed persons, or 8.8% over the year (Figure 1).
- The unemployment rate in Toowoomba SA4 in August 2019 was 4.5 per cent, a decrease of 0.8 percentage point over the year. The unemployment rate for this area was the lowest of all 19 SA4s within Queensland (Figure 2).
- The participation rate in Toowoomba SA4 in August 2019 was 57.4 per cent, a decrease of 7.2 percentage points over the year (Table 1).

SA4 = Statistical Area Level 4 (ASGS 2016 edition)

Notes (refer to website for more detailed notes):

Data for Queensland as a whole are provided for reference purposes only.

The labour force statistics presented in this brief are on a sample basis and will include a sampling error.

Totals may differ due to rounding. Figures are rounded to nearest 100 persons. Calculations are based on pre-rounded figures.

Figure 1 Annual change in employment, Toowoomba SA4

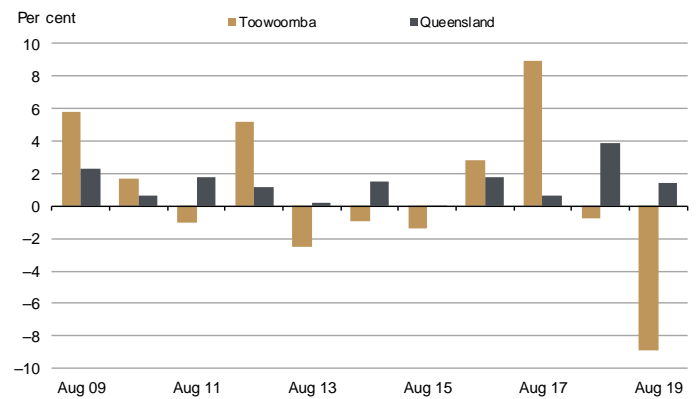


Figure 2 Unemployment rate by SA4, August 2019

