

Regional labour force – Townsville SA4, Aug 19

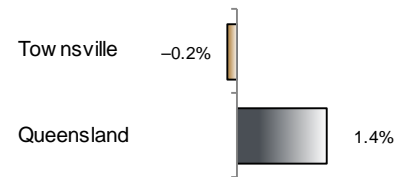
Source: ABS 6291.0.55.001, released 26 September 2019, 11:30 am (AEST)

Table 1 Labour force status, Townsville SA4

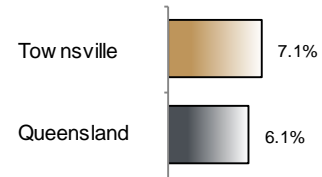
	Year ending			Annual change	
	Aug 18	Jul 19	Aug 19	persons	%
	— persons —			persons	%
Total employed	107,600	107,200	107,500	-200	-0.2
Total unemployed	11,300	8,100	8,200	-3,100	-27.5
Total labour force	118,900	115,300	115,700	-3,300	-2.7
Not in the labour force	64,400	69,900	69,700	5,300	8.2
Total persons 15+	183,400	185,200	185,400	2,000	1.1
Participation rate (%)	64.9	62.3	62.4	..	-2.5 (a)
Unemployment rate (%)	9.5	7.0	7.1	..	-2.4 (a)

(a) Percentage point change.

Employment growth, annual



Unemployment rate



Key data

Employment (annual change)..... ↓ 0.2%
 Unemployment rate 7.1%
 Unemployment rate (annual change) ↓ 2.4 ppt
 Participation rate 62.4%

ppt = percentage point

Main findings

Note: All data in this brief are based on 12-month moving averages. This approach is supported by ABS advice on analysis of regional labour force estimates (see Table 16(b) of *Labour Force, Australia, Detailed* (cat. no. 6291.0.55.001)).

- The number of employed persons in Townsville SA4 in August 2019 was 107,500 persons, a decrease of 200 employed persons, or 0.2% over the year (Figure 1).
- The unemployment rate in Townsville SA4 in August 2019 was 7.1 per cent, a decrease of 2.4 percentage points over the year. The unemployment rate for this area was the fifth-highest of all 19 SA4s within Queensland (Figure 2).
- The participation rate in Townsville SA4 in August 2019 was 62.4 per cent, a decrease of 2.5 percentage points over the year (Table 1).

SA4 = Statistical Area Level 4 (ASGS 2016 edition)

Notes (refer to website for more detailed notes):

Data for Queensland as a whole are provided for reference purposes only.

The labour force statistics presented in this brief are on a sample basis and will include a sampling error.

Totals may differ due to rounding. Figures are rounded to nearest 100 persons. Calculations are based on pre-rounded figures.

Figure 1 Annual change in employment, Townsville SA4

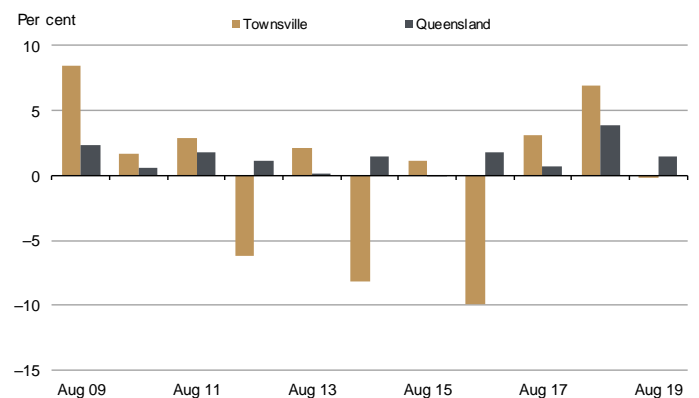


Figure 2 Unemployment rate by SA4, August 2019

