

Regional labour force – Townsville SA4, Sep 19

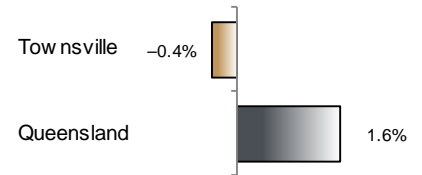
Source: ABS 6291.0.55.001, released 24 October 2019, 10:30 am (AEST)

Table 1 Labour force status, Townsville SA4

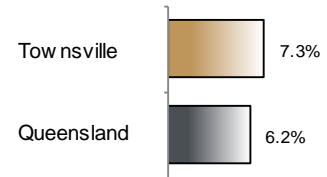
	Year ending			Annual change	
	Sep 18	Aug 19	Sep 19	persons	%
	— persons —			persons	%
Total employed	108,000	107,500	107,600	-400	-0.4
Total unemployed	10,900	8,200	8,400	-2,500	-22.6
Total labour force	118,900	115,700	116,000	-2,800	-2.4
Not in the labour force	64,600	69,700	69,500	4,900	7.5
Total persons 15+	183,500	185,400	185,500	2,000	1.1
Participation rate (%)	64.8	62.4	62.5	..	-2.2 (a)
Unemployment rate (%)	9.1	7.1	7.3	..	-1.9 (a)

(a) Percentage point change.

Employment growth, annual



Unemployment rate



Key data

Employment (annual change)..... ↓ 0.4%
 Unemployment rate 7.3%
 Unemployment rate (annual change) ↓ 1.9 ppt
 Participation rate 62.5%

ppt = percentage point

Main findings

Note: All data in this brief are based on 12-month moving averages. This approach is supported by ABS advice on analysis of regional labour force estimates (see Table 16(b) of *Labour Force, Australia, Detailed* (cat. no. 6291.0.55.001)).

- The number of employed persons in Townsville SA4 in September 2019 was 107,600 persons, a decrease of 400 employed persons, or 0.4% over the year (Figure 1).
- The unemployment rate in Townsville SA4 in September 2019 was 7.3 per cent, a decrease of 1.9 percentage points over the year. The unemployment rate for this area was the fifth-highest of all 19 SA4s within Queensland (Figure 2).
- The participation rate in Townsville SA4 in September 2019 was 62.5 per cent, a decrease of 2.2 percentage points over the year (Table 1).

SA4 = Statistical Area Level 4 (ASGS 2016 edition)

Notes (refer to website for more detailed notes):

Data for Queensland as a whole are provided for reference purposes only.

The labour force statistics presented in this brief are on a sample basis and will include a sampling error.

Totals may differ due to rounding. Figures are rounded to nearest 100 persons. Calculations are based on pre-rounded figures.

Figure 1 Annual change in employment, Townsville SA4

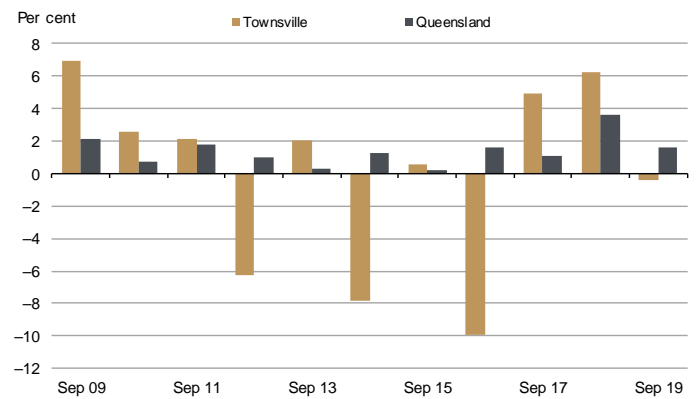


Figure 2 Unemployment rate by SA4, September 2019

