

Regional labour force – Toowoomba SA4, Apr 20

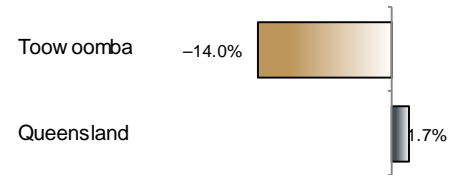
Source: ABS 6291.0.55.001, released 21 May 2020, 11:30 am (AEST)

Table 1 Labour force status, Toowoomba SA4

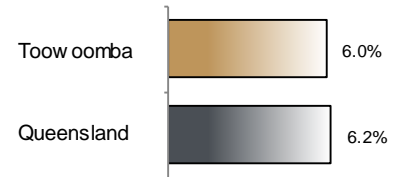
	Year ending			Annual change	
	Apr 19	Mar 20	Apr 20	persons	%
	— persons —			persons	%
Total employed	74,100	63,000	63,800	-10,400	-14.0
Total unemployed	3,900	3,300	4,000	200	4.0
Total labour force	78,000	66,400	67,800	-10,200	-13.1
Not in the labour force	47,000	60,200	59,000	12,000	25.5
Total persons 15+	125,000	126,600	126,700	1,800	1.4
Participation rate (%)	62.4	52.4	53.5	..	-8.9 (a)
Unemployment rate (%)	5.0	5.0	6.0	..	1.0 (a)

(a) Percentage point change.

Employment growth, annual



Unemployment rate



Key data

Employment (annual change)..... ↓ 14.0%
 Unemployment rate 6.0%
 Unemployment rate (annual change) ↑ 1.0 ppt
 Participation rate 53.5%

ppt = percentage point

Main findings

Note: Due to the high standard errors associated with regional labour force survey data, the ABS and QGSO recommend using 12-month averages to reduce the volatility of the underlying original data. This volatility means it can be difficult to detect real world phenomena, such as those caused by the social distancing measures introduced to combat COVID-19, in the data. **As a result, it is not recommended regional labour force data be used to assess the impact of COVID-19.**

- The number of employed persons in Toowoomba SA4 in April 2020 was 63,800 persons, a decrease of 10,400 employed persons, or 14.0% over the year (Figure 1).
- The unemployment rate in Toowoomba SA4 in April 2020 was 6.0 per cent, an increase of 1.0 percentage point over the year. The unemployment rate for this area was the ninth-lowest of all 19 SA4s within Queensland (Figure 2).
- The participation rate in Toowoomba SA4 in April 2020 was 53.5 per cent, a decrease of 8.9 percentage points over the year (Table 1).

SA4 = Statistical Area Level 4 (ASGS 2016 edition)

Notes (refer to website for more detailed notes):

Data for Queensland as a whole are provided for reference purposes only.

The labour force statistics presented in this brief are on a sample basis and will include a sampling error.

Totals may differ due to rounding. Figures are rounded to nearest 100 persons. Calculations are based on pre-rounded figures.

Figure 1 Annual change in employment, Toowoomba SA4

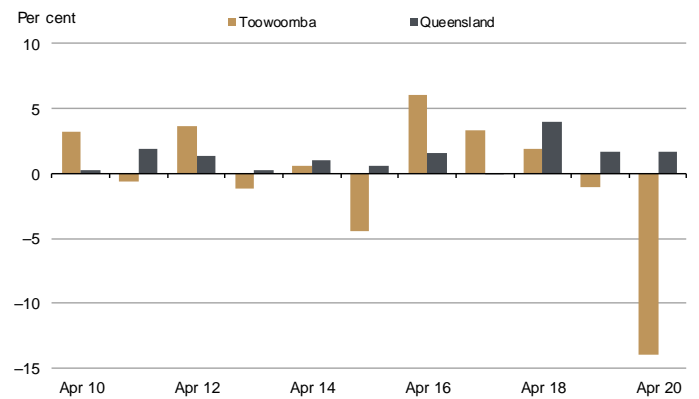


Figure 2 Unemployment rate by SA4, April 2020

