

Regional labour force – Wide Bay SA4, Apr 20

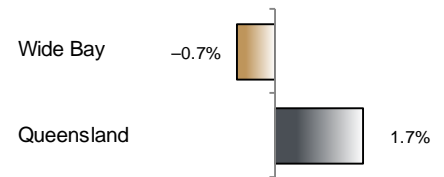
Source: ABS 6291.0.55.001, released 21 May 2020, 11:30 am (AEST)

Table 1 Labour force status, Wide Bay SA4

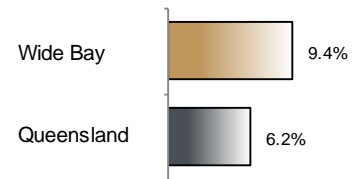
	Year ending			Annual change	
	Apr 19	Mar 20	Apr 20	persons	%
	— persons —			persons	%
Total employed	112,500	112,300	111,600	-800	-0.7
Total unemployed	9,100	11,400	11,600	2,500	27.7
Total labour force	121,500	123,700	123,200	1,700	1.4
Not in the labour force	123,400	123,700	124,400	1,000	0.8
Total persons 15+	244,900	247,400	247,600	2,700	1.1
Participation rate (%)	49.6	50.0	49.8	..	0.1 (a)
Unemployment rate (%)	7.5	9.2	9.4	..	1.9 (a)

(a) Percentage point change.

Employment growth, annual



Unemployment rate



Key data

Employment (annual change)..... ↓ 0.7%
 Unemployment rate 9.4%
 Unemployment rate (annual change) ↑ 1.9 ppt
 Participation rate 49.8%

ppt = percentage point

Main findings

Note: Due to the high standard errors associated with regional labour force survey data, the ABS and QGSO recommend using 12-month averages to reduce the volatility of the underlying original data. This volatility means it can be difficult to detect real world phenomena, such as those caused by the social distancing measures introduced to combat COVID-19, in the data. **As a result, it is not recommended regional labour force data be used to assess the impact of COVID-19.**

- The number of employed persons in Wide Bay SA4 in April 2020 was 111,600 persons, a decrease of 800 employed persons, or 0.7% over the year (Figure 1).
- The unemployment rate in Wide Bay SA4 in April 2020 was 9.4 per cent, an increase of 1.9 percentage points over the year. The unemployment rate for this area was the second-highest of all 19 SA4s within Queensland (Figure 2).
- The participation rate in Wide Bay SA4 in April 2020 was 49.8 per cent, an increase of 0.1 percentage point over the year (Table 1).

SA4 = Statistical Area Level 4 (ASGS 2016 edition)

Notes (refer to website for more detailed notes):

Data for Queensland as a whole are provided for reference purposes only.

The labour force statistics presented in this brief are on a sample basis and will include a sampling error.

Totals may differ due to rounding. Figures are rounded to nearest 100 persons. Calculations are based on pre-rounded figures.

Figure 1 Annual change in employment, Wide Bay SA4

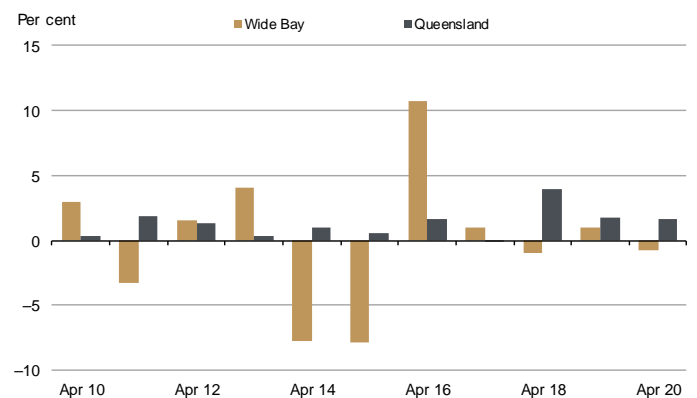


Figure 2 Unemployment rate by SA4, April 2020

