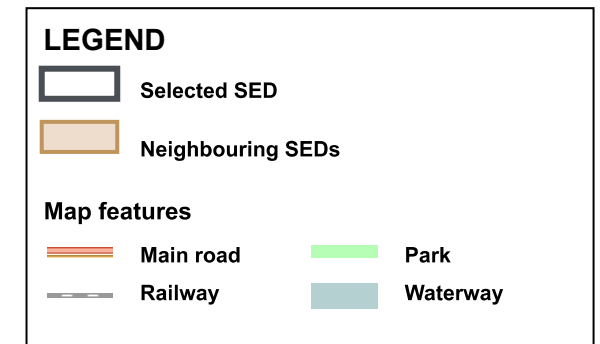
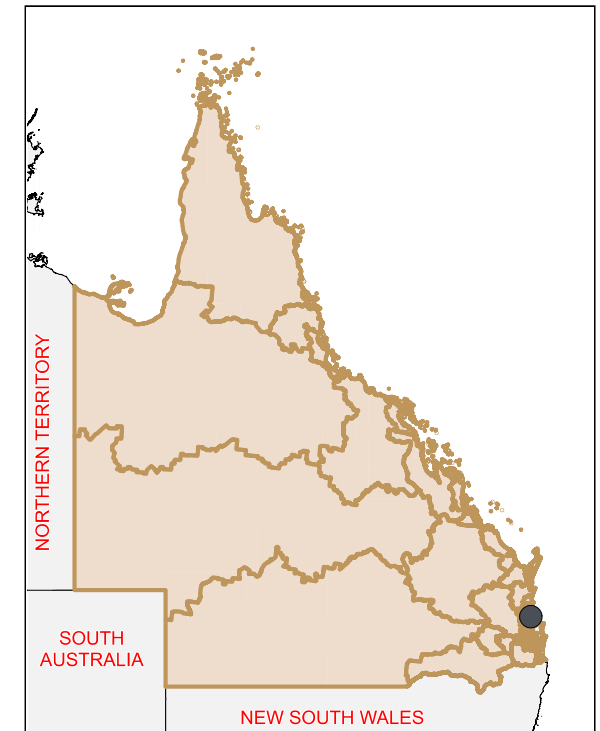
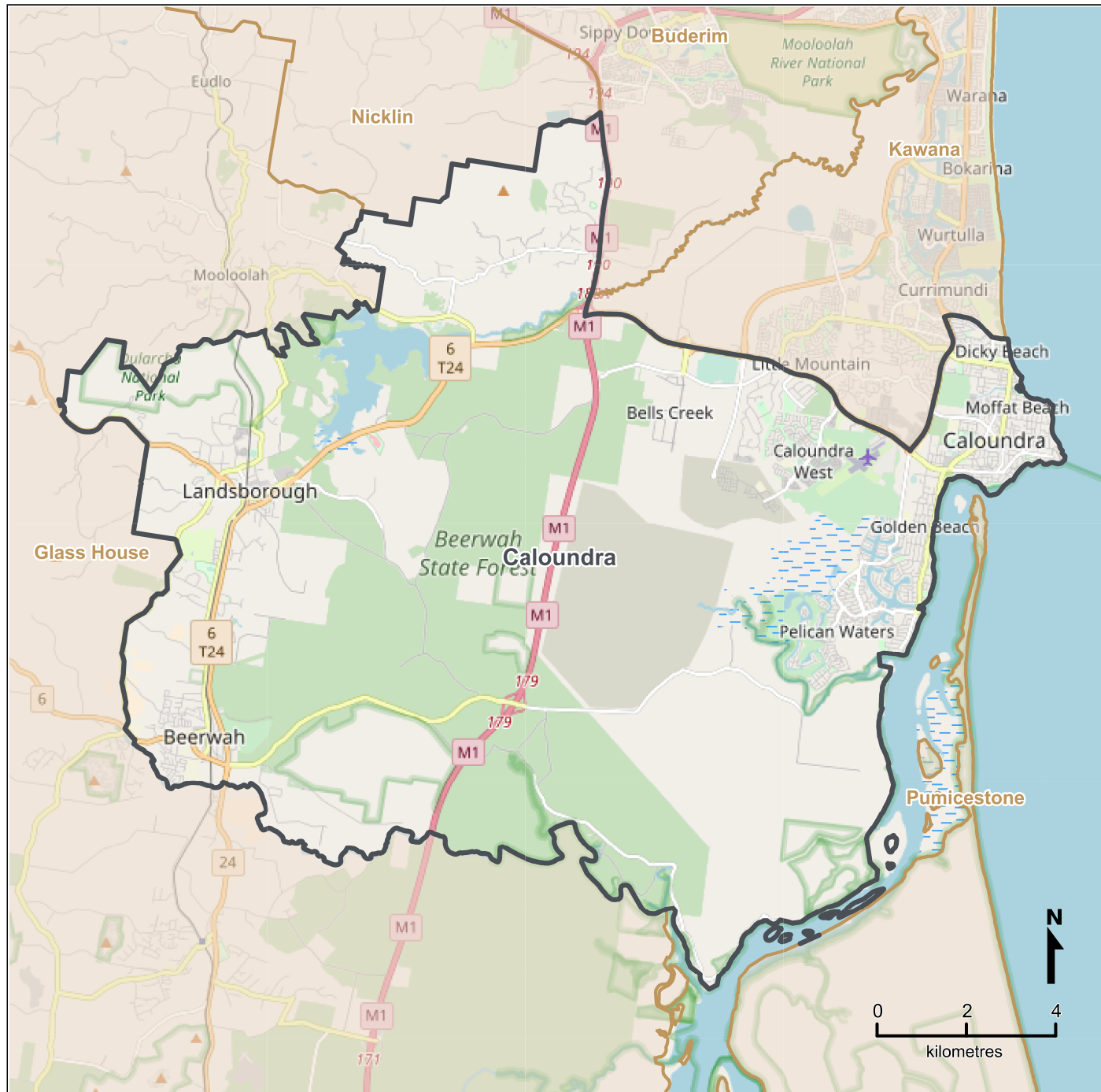


# Queensland State Electoral Districts (SED), 2017 - Caloundra



Map produced by Queensland Government Statistician's Office, Queensland Treasury (<http://www.qgso.qld.gov.au/products/maps/>). Maps sourced from Electoral Commission Queensland.

© OpenStreetMap contributors (<http://openstreetmap.org/>)

 <http://creativecommons.org/licenses/by/4.0>

© The State of Queensland (Queensland Treasury) 2018