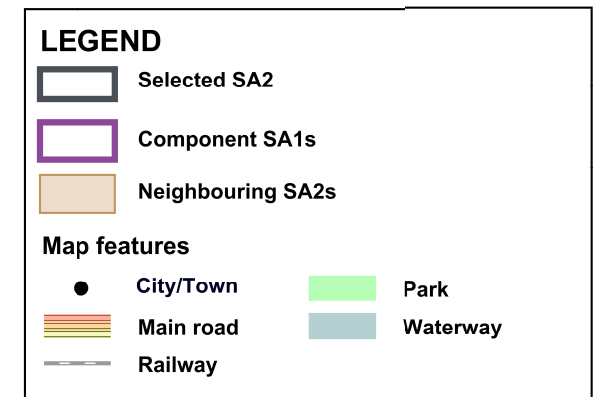
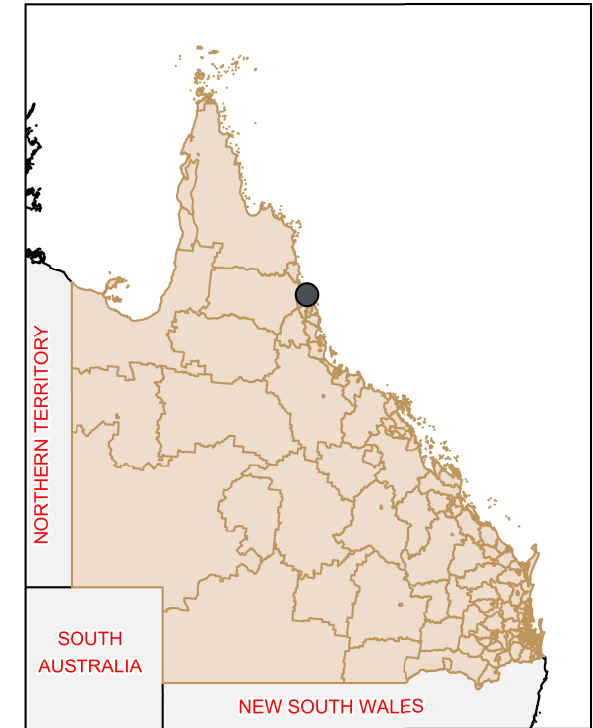
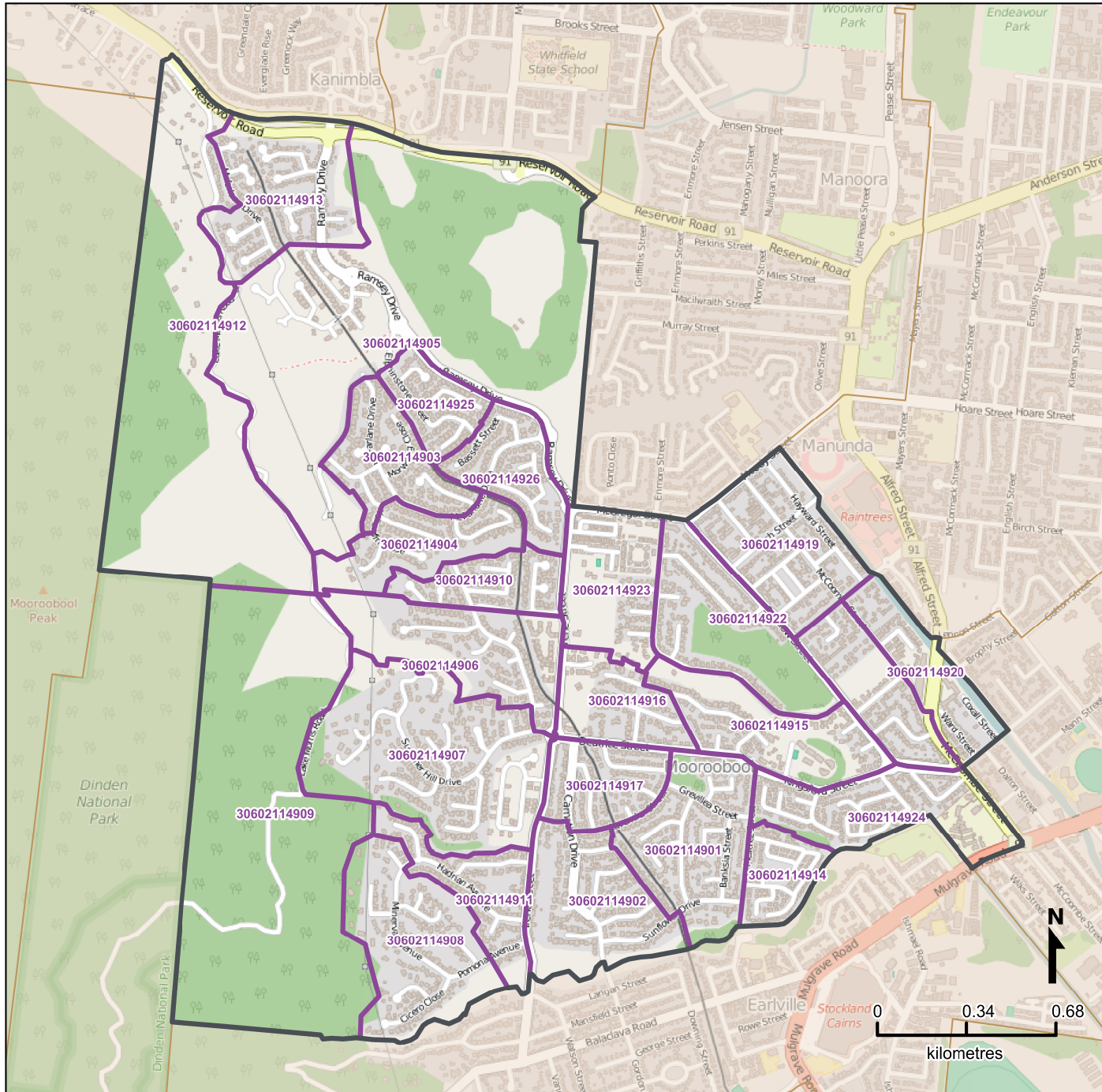


Queensland Statistical Areas, Level 1 (SA1), 2016 - SA1s within Kanimbla - Mooroolbool SA2



Map produced by Queensland Government Statistician's Office, Queensland Treasury (<http://www.qgso.qld.gov.au/products/maps/>). Data sourced from ABS 1270.0.55.001

© OpenStreetMap contributors (<http://openstreetmap.org/>)

<http://creativecommons.org/licenses/by/4.0>

© The State of Queensland (Queensland Treasury) 2016