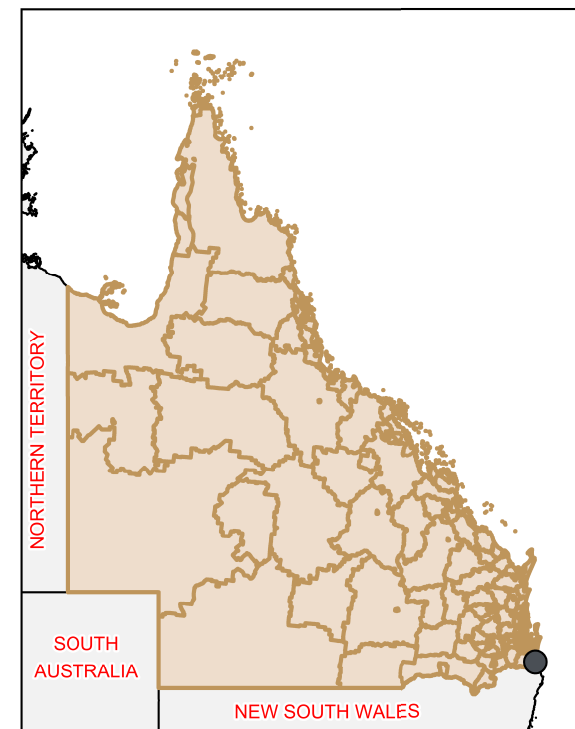
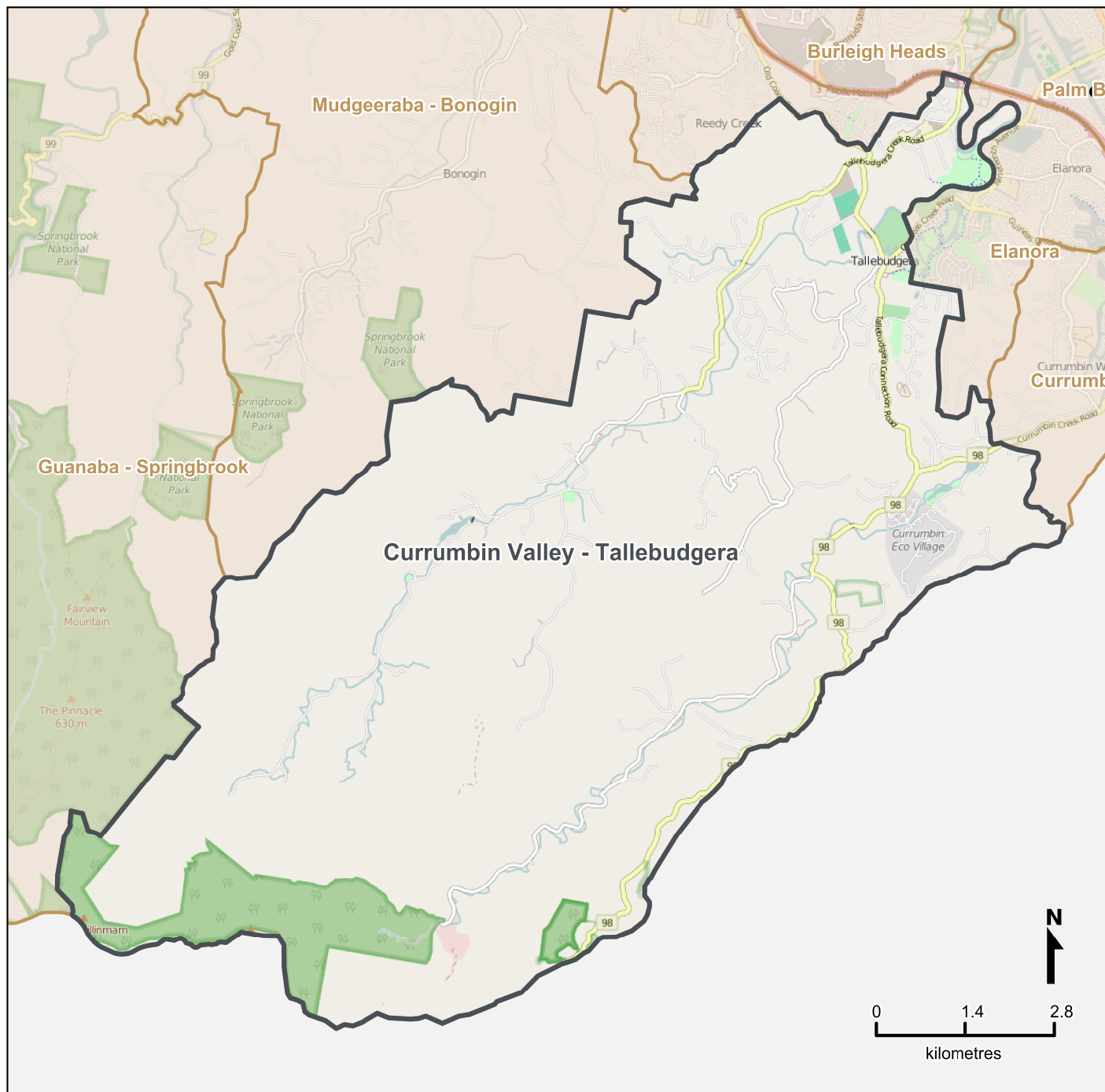


Queensland Statistical Areas, Level 2 (SA2), 2016 - Currumbin Valley - Tallebudgera (ASGS Code 309051243)



LEGEND

- Selected SA2
- Neighbouring SA2s

Map features

- City/Town
- == Main road
- Railway
- Park
- Waterway

Map produced by Queensland Government Statistician's Office,
Queensland Treasury (<http://www.qgso.qld.gov.au/products/maps/>).
Data sourced from ABS 1270.0.55.001

© OpenStreetMap contributors (<http://openstreetmap.org/>)

<http://creativecommons.org/licenses/by/4.0>

© The State of Queensland (Queensland Treasury) 2016