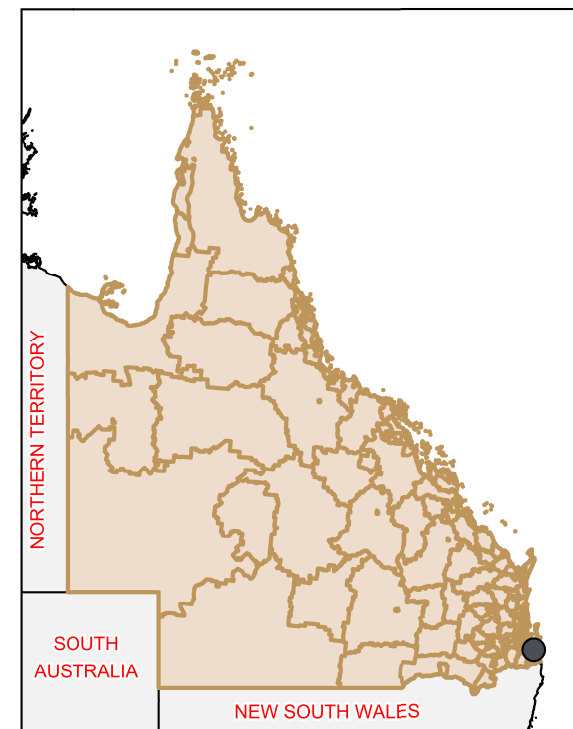
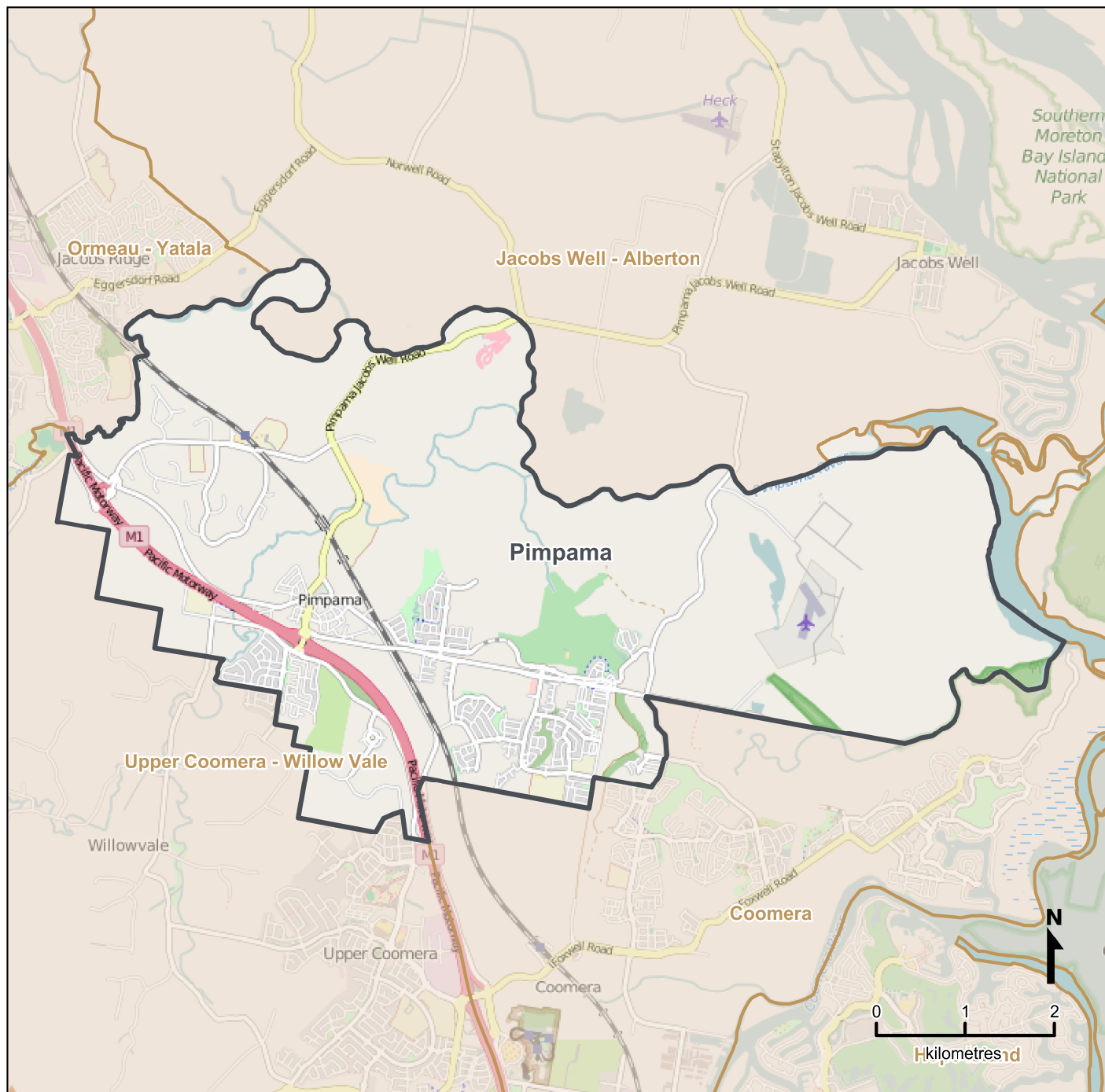


Queensland Statistical Areas, Level 2 (SA2), 2016 - Pimpama (ASGS Code 309071257)



LEGEND

- Selected SA2
- Neighbouring SA2s

Map features

- City/Town
- /// Main road
- Railway
- Park
- Waterway

Map produced by Queensland Government Statistician's Office, Queensland Treasury (<http://www.qgso.qld.gov.au/products/maps/>). Data sourced from ABS 1270.0.55.001

© OpenStreetMap contributors (<http://openstreetmap.org/>)

<http://creativecommons.org/licenses/by/4.0>

© The State of Queensland (Queensland Treasury) 2016