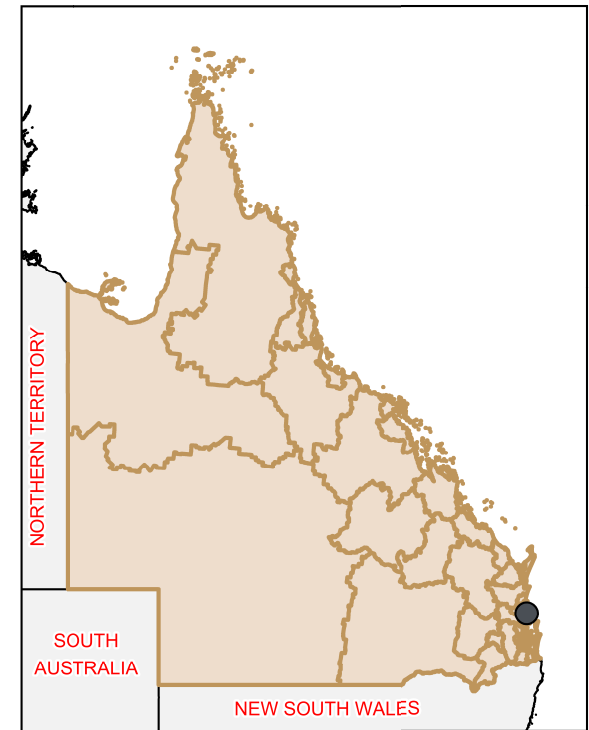
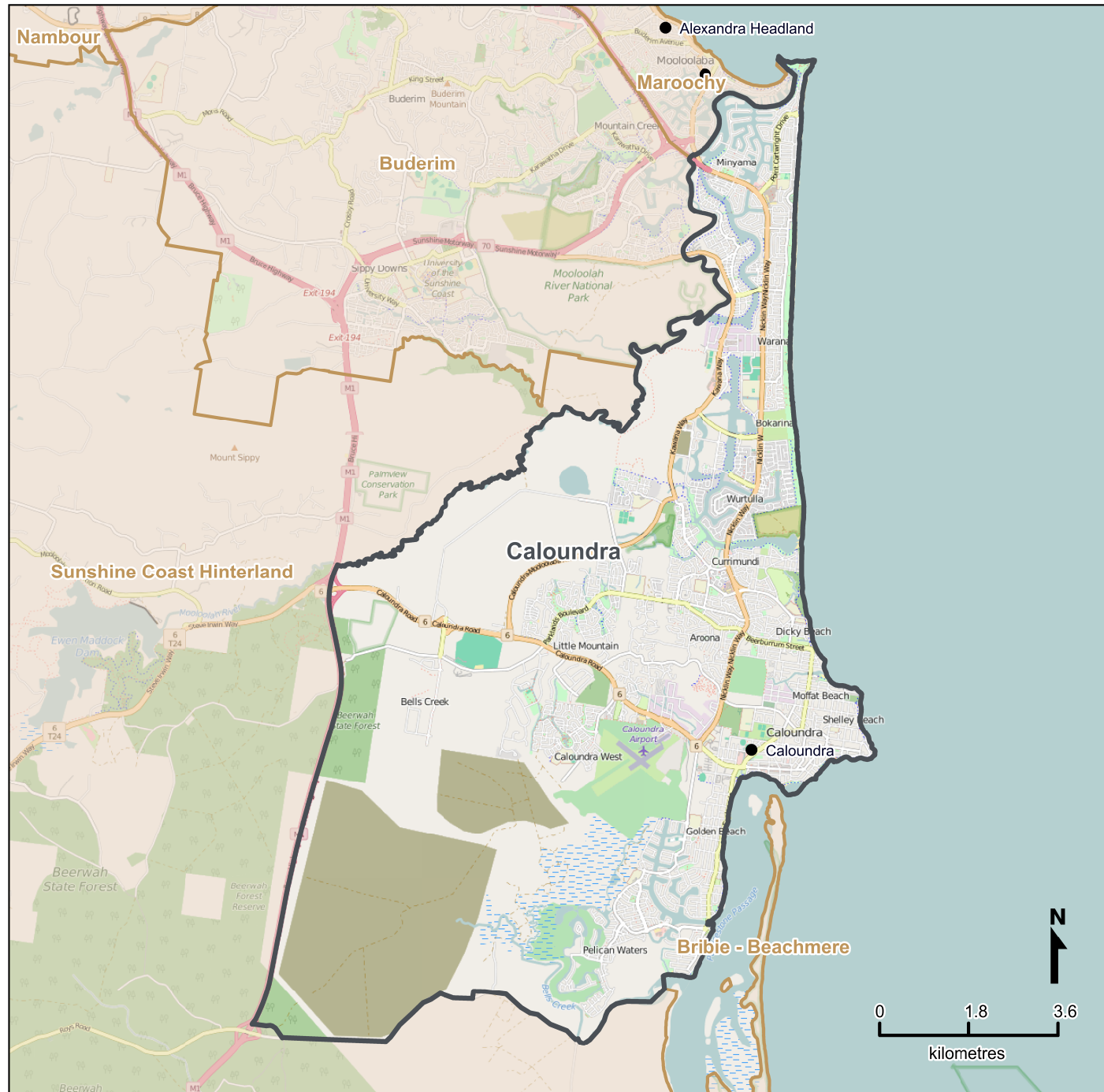


# Queensland Statistical Areas, Level 3 (SA3), 2016 - Caloundra (ASGS Code 31602)



**LEGEND**

- Selected SA3
- Neighbouring SA3s

**Map features**

- City/Town
- Park
- Main road
- Waterway
- Railway

Map produced by Queensland Government Statistician's Office, Queensland Treasury (<http://www.qgso.qld.gov.au/products/maps/>). Data sourced from ABS 1270.0.55.001

© OpenStreetMap contributors (<http://openstreetmap.org/>)

<http://creativecommons.org/licenses/by/4.0>

© The State of Queensland (Queensland Treasury) 2016